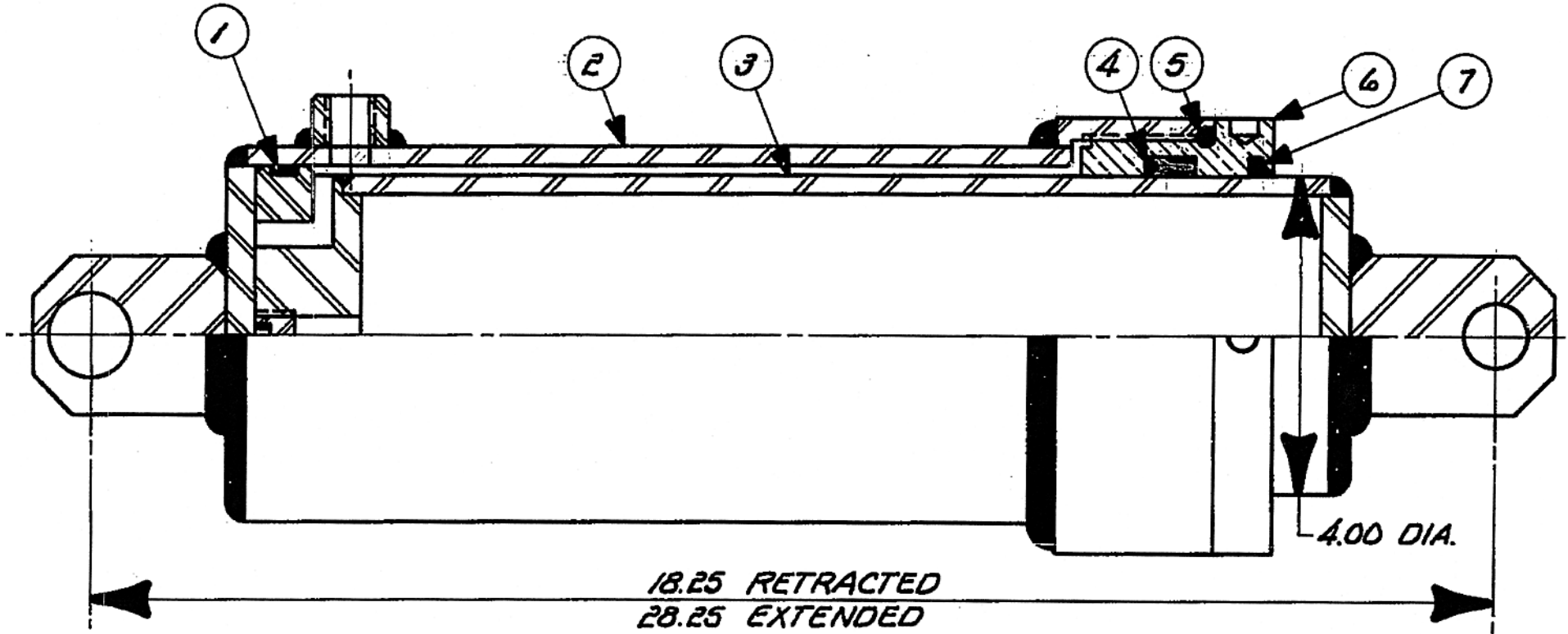


ALWAYS INCLUDE SERIAL NO. OF FLOW
WHEN ORDERING PARTS

RUBBER PRODUCTS KIT
P/N P-114-70-SA-400-RPK-WP
CONSISTS OF ITEMS #4, 5 & 7.

2500 PSI MAX. OPERATING PRESSURE

ITEM	PART #	REQ.	DESCRIPTION
1	P-114-70-30425	1	WEAR RING
2	P-114-70-2	1	JACKET ASS'Y
3	P-114-70-3	1	PISTON ROD ASS'Y
4	P-114-70-21401	1	POLYPAK (TYPE "B")
5	P-114-70-18352	1	"O"-RING
6	P-114-70-13730	1	GLAND NUT
7	P-114-70-12400	1	ROD WIPER



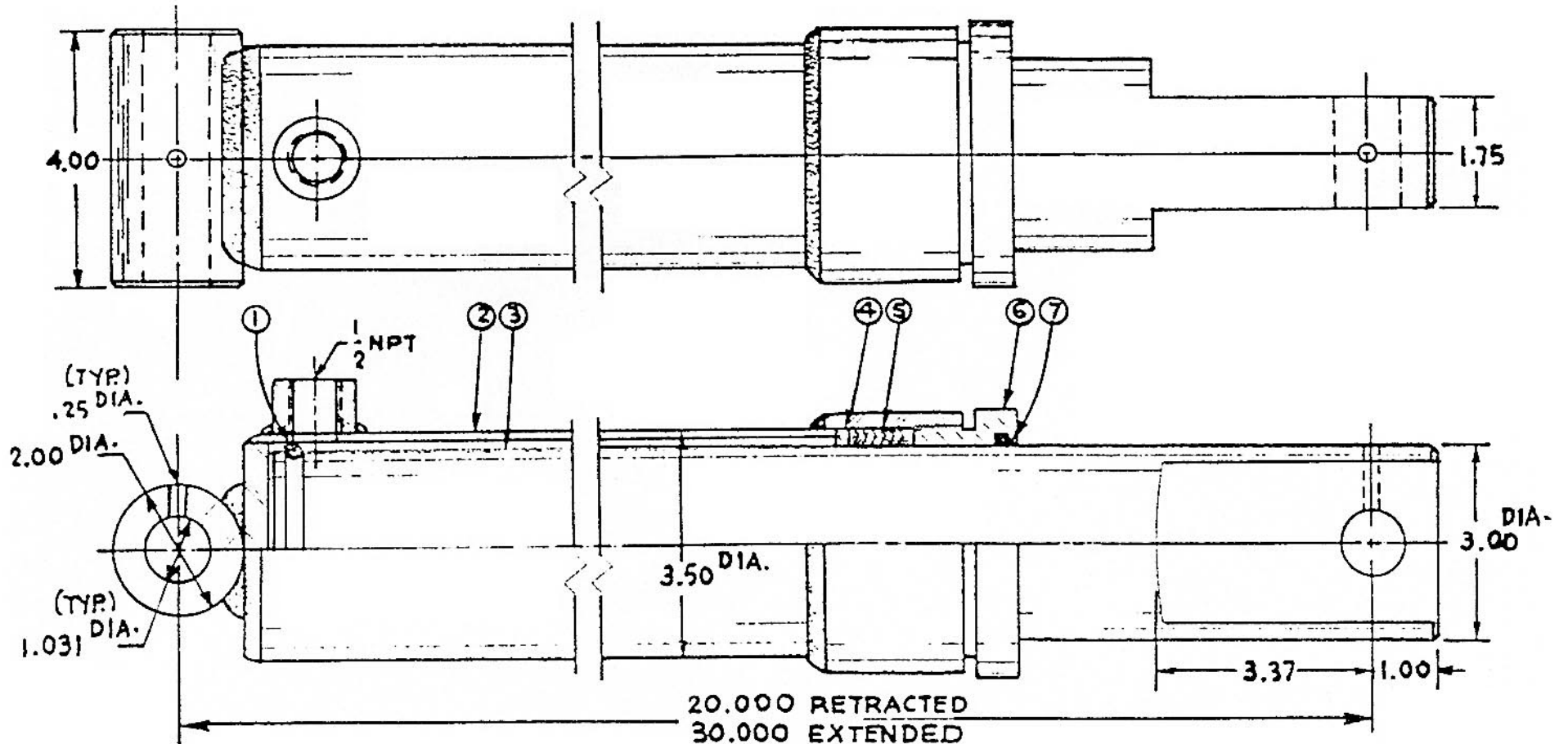
The Gledhill Road Machinery Co.

PARTS DRAWING FOR P-114-70
4" x 10" S.A. CYLINDER

PD-1080

ALWAYS INCLUDE SERIAL NO. OF FLOW
WHEN ORDERING PARTS

ITEM	PART #	REQ.	DESCRIPTION
1	P-114-82-35300	1	PISTON LOCK RING
2		1	JACKET ASS'Y
3		1	PISTON ROD
4	P-114-82-16301	1	WASHER
5	P-114-82-15300	1	V-PACKING
6	P-114-82-13670	1	GLAND NUT
7	P-114-82-12300	1	ROD WIPER
8			



The Gledhill Road Machinery Co.

PARTS DRAWING FOR P-114-82
3" DIA. ROD X 10" STROKE
S.A. CYLINDER PLOW LIFT
CYLINDER FOR WISS-921-

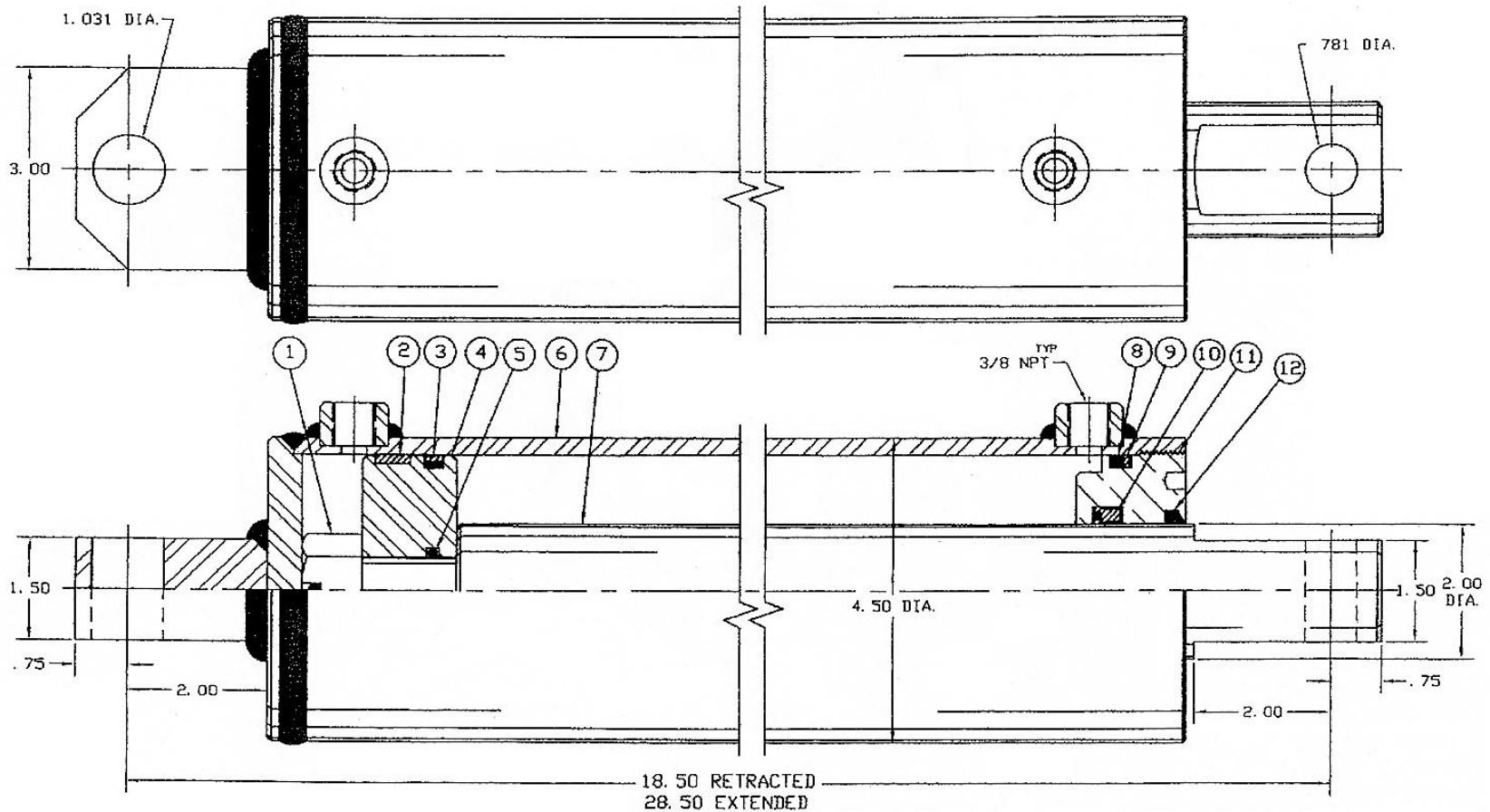
PD-1115

ALWAYS INCLUDE SERIAL NO. OF PLOW
WHEN ORDERING PARTS

* SEAL REPAIR KIT NO.
DA-400-200-RPK-POP

INCLUDES ITEMS 2, 3, 5,
8, 9, 10 & 12

ITEM	PART #	REQ.	DESCRIPTION
1	P-114-23103	1	SLOTTED NUT
2	*	1	WEAR RING
3	*	1	PSP SEAL
4	P-114-22421	1	PISTON (STEEL)
5	*	1	'O' RING
6	P-114-111-JACKET	1	JACKET ASSEMBLY
7	P-114-111-ROD	1	PISTON ROD
8	*	1	'O' RING
9	*	1	BACKUP WASHER
10	*	1	POLYPAK (TYPE 'B')
11	P-114-1375303	1	GLAND NUT
12	*	1	ROD WIPER



The Gledhill Road Machinery Co.

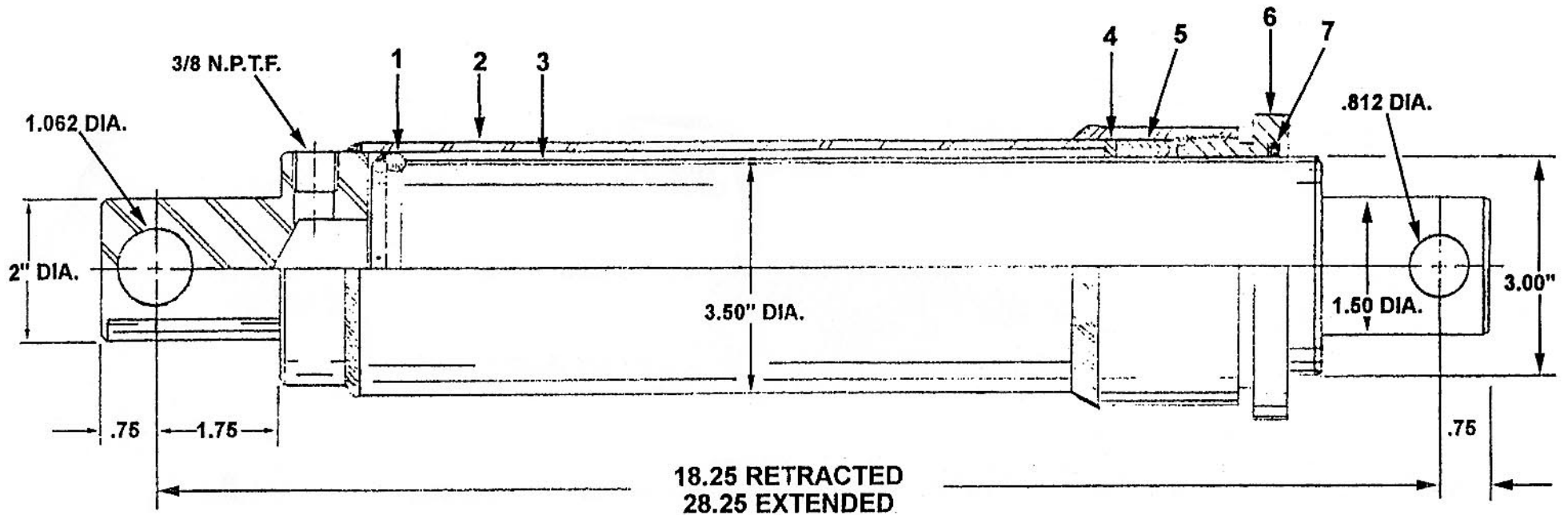
PARTS DRAWING FOR P-114-111
4" BORE X 10" STROKE D.A.
CYLINDER (FFLP OR HFF HITCH)

PD-1273

ALWAYS INCLUDE SERIAL NO. OF PLOW
WHEN ORDERING PARTS

2500 PSI MAX. OPERATING PRESSURE

ITEM	PART #	REQ.	DESCRIPTION
1	P-114-35300	1	PISTON LOCK RING
2	P-114-66-JACKET	1	JACKET ASS'Y
3	P-114-66-ROD	1	PISTON ROD
4	P-114-16301	1	WASHER
5	P-114-15300	1	V-PACKING
6	P-114-13670	1	GLAND NUT
7	P-114-12300	1	ROD WIPER
8	SA300-RPK	1	SEAL KIT (ITEMS 5 & 7)



The Gledhill Road Machinery Co.

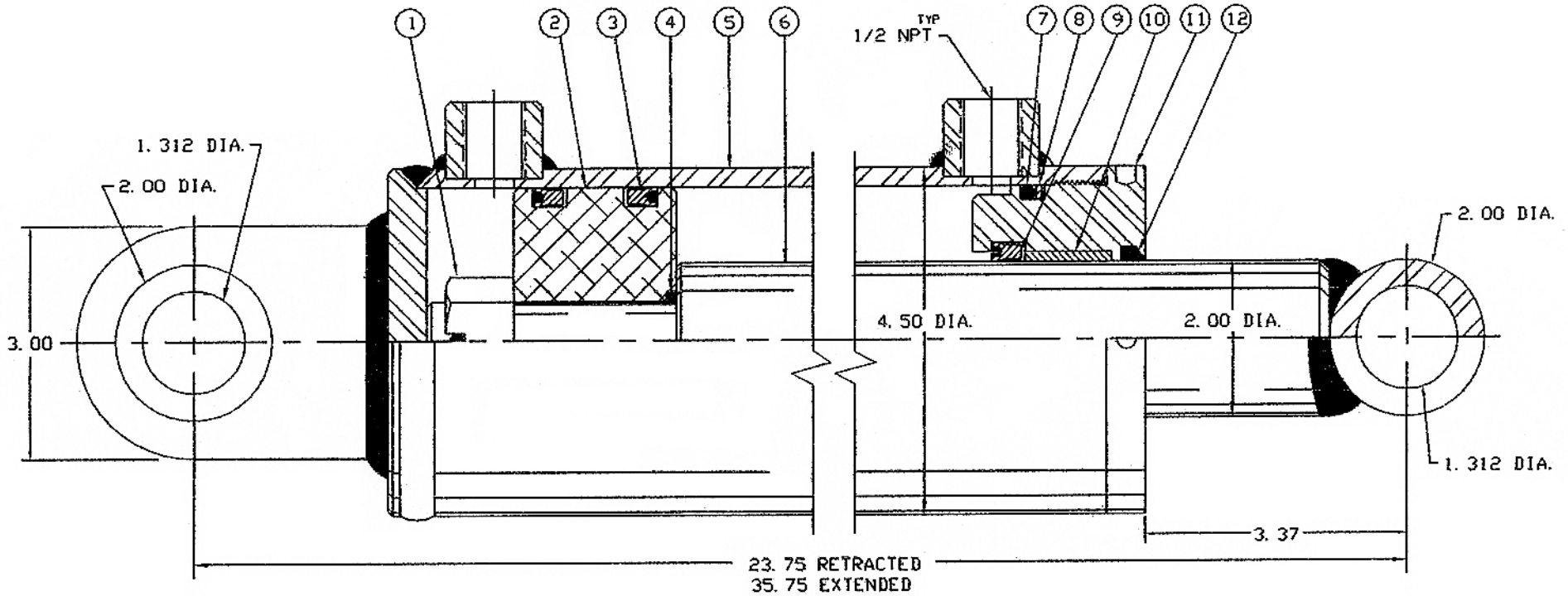
PARTS DRAWING FOR
3"X10" S.A. CYLINDER
(P-114-66-1)

PD-1069

ALWAYS INCLUDE SERIAL NO. OF FLOW
WHEN ORDERING PARTS

NOTE:
SEAL REPAIR KIT NO.
DA-400-200-RPK-POP
INCLUDES ITEMS 3, 4, 7,
8, 9 & 12

ITEM	PART #	REQ.	DESCRIPTION
1	P-114-23103	1	SLOTTED NUT
2	P-114-22401	1	PISTON (ALUM)
3	P-114-21350	2	POLYPAK
4	P-114-18214	1	'O' RING
5	P-114-94-JACKET	1	JACKET ASS'Y
6	P-114-94-ROD	1	PISTON ROD
7	P-114-18342	1	'O' RING
8	P-114-39342	1	BACKUP WASHER
9	P-114-21204	1	POLYPAK (TYPE 'B')
10	P-114-94-BUSH	1	BRONZE BUSHINGS
11	P-114-14426	1	HEADSTOCK
12	P-114-12200	1	ROD WIPER



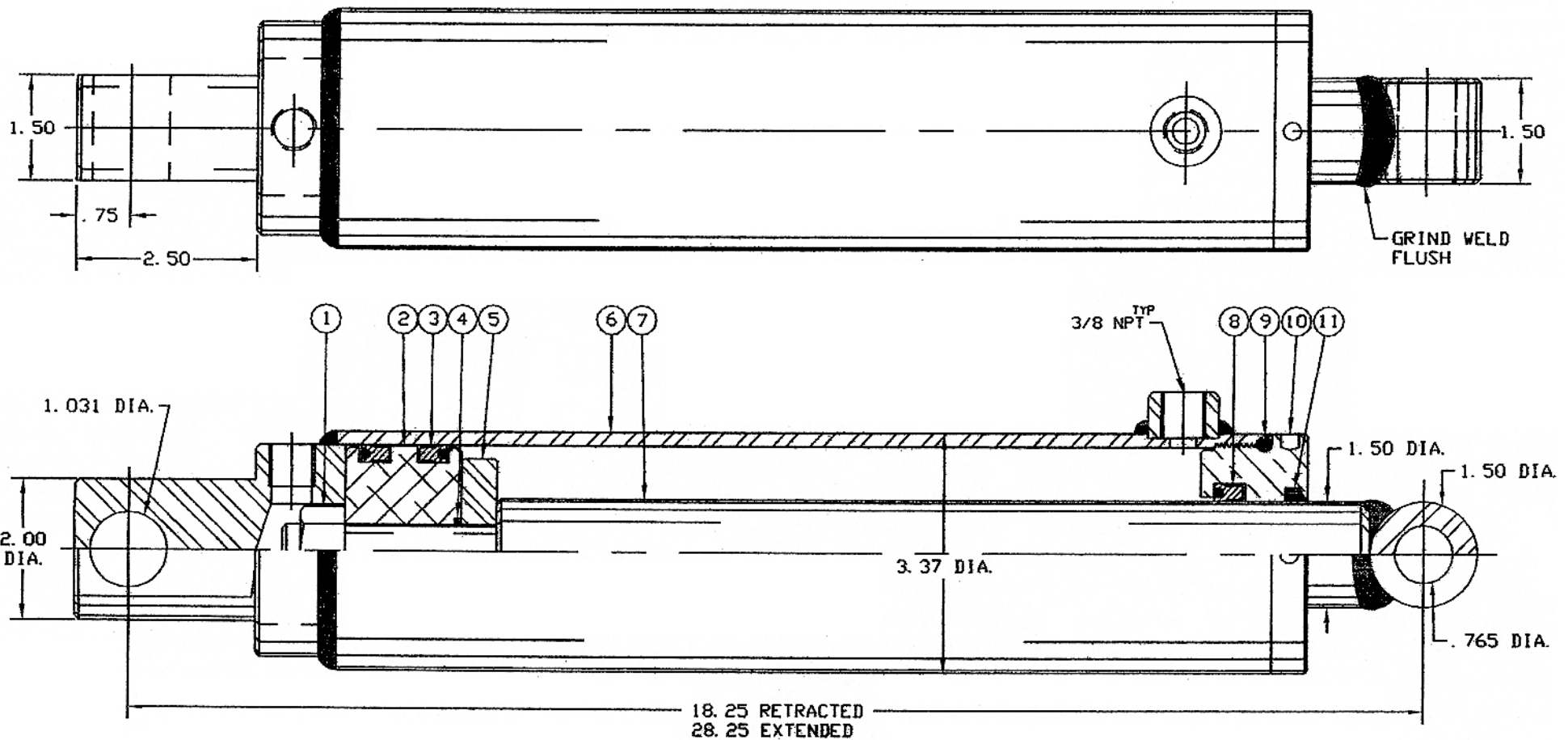
The Gledhill Road Machinery Co.

PARTS DRAWING FOR P-114-94
4" BORE X 12" STROKE D.A. CYLINDER PD-1182

ALWAYS INCLUDE SERIAL NO. OF FLOW
WHEN ORDERING PARTS

NOTE:
SEAL REPAIR KIT NO.
DA-300-150-RPK-PP
INCLUDES ITEMS 3, 4, 8,
9 & 11

ITEM	PART #	REQ.	DESCRIPTION
1	P-114-23075	1	LOCKNUT
2	P-114-22301	1	PISTON (ALUM)
3	P-114-21250	2	POLYPAK
4	P-114-18116	1	'O' RING
5	P-114-19300	1	SPACER
6	P-144-62-JACKET	1	JACKET ASS'Y
7	P-114-62-ROD	1	PISTON ROD
8	P-114-21153	1	POLYPAK (TYPE 'B')
9	P-114-18336	1	'O' RING
10	P-114-13701	1	GLAND NUT
11	P-114-12150	1	ROD WIPER



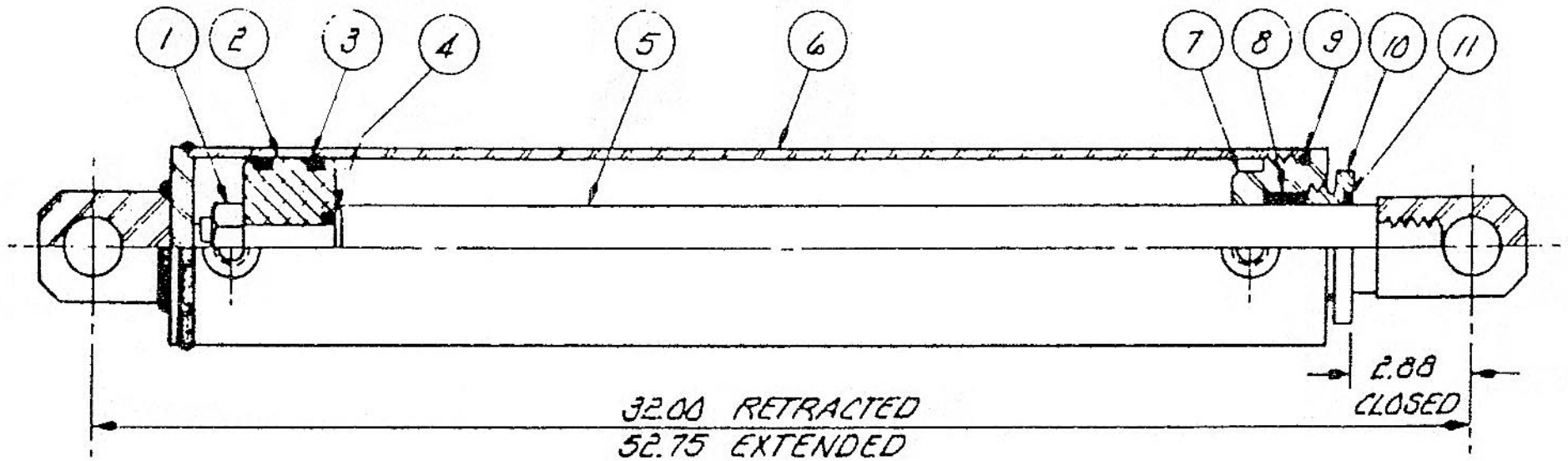
The Gledhill Road Machinery Co.

PARTS DRAWING FOR P-114-62
4" BORE X 10" STROKE D.A. CYLINDER PD-1047

ALWAYS INCLUDE SERIAL NO. OF PLOW
WHEN ORDERING PARTS

NOTE:
SEAL KIT PART NO.
DA400-200-RPKPV
CONSISTS OF ITEMS
#3,4,8,9, & 11

ITEM	PART #	REQ.	DESCRIPTION
1	P-114-55-23100	1	LOCKNUT
2	P-114-55-22401	1	PISTON
3	P-114-5521350	2	POLYPAK
4	P-114-55-18214	1	O-RING
5	P-114-55-ROD	1	PISTON ROD
6	P-114-55-JACKET	1	JACKET ASS'Y
7	P-114-55-14401	1	HEADSTOCK
8	P-114-55-15200	1	ROD PACKING
9	P-114-55-18344	1	O-RING
10	P-114-55-13620	1	GLAND NUT
11	P-114-55-12200	1	ROD WIPER

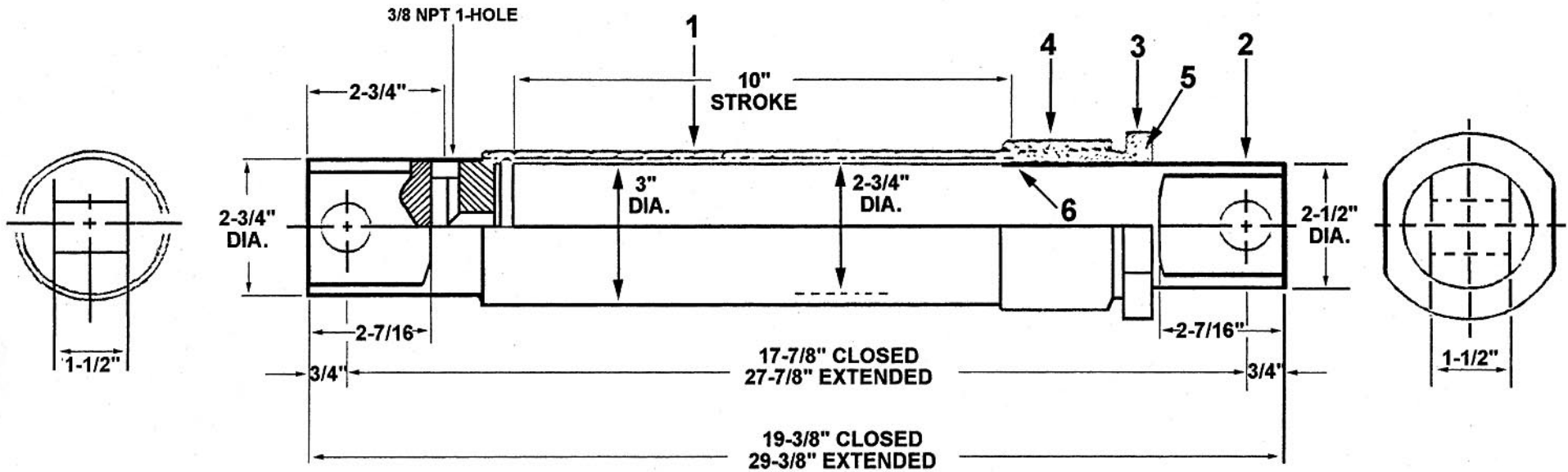


The Gledhill Road Machinery Co.

PARTS DRAWING FOR P-114-55
4" BORE X 20-3/4" REVERSING. CYLINDER PD-1026

ALWAYS INCLUDE SERIAL NO. OF FLOW
WHEN ORDERING PARTS

ITEM	PART #	REQ.	DESCRIPTION
1	P-114-28-1-JKET	1	JACKET
2	P-114-28-1-ROD	1	ROD
3	P-114-13650	1	PACKING GLAND
4	P-114-15250	1	PACKING SET
5	P-114-12250	1	WIPER
6	P-114-35251	1	RETAINING RING
7	SA250-RPK	1	SEAL REPAIR KIT (ITEMS 4 & 5)



The Gledhill Road Machinery Co.

PARTS DRAWING FOR P-114-28-1
2-1/2" X 10" S.A.. CYLINDER
FOR PCL FLOW

PD-832