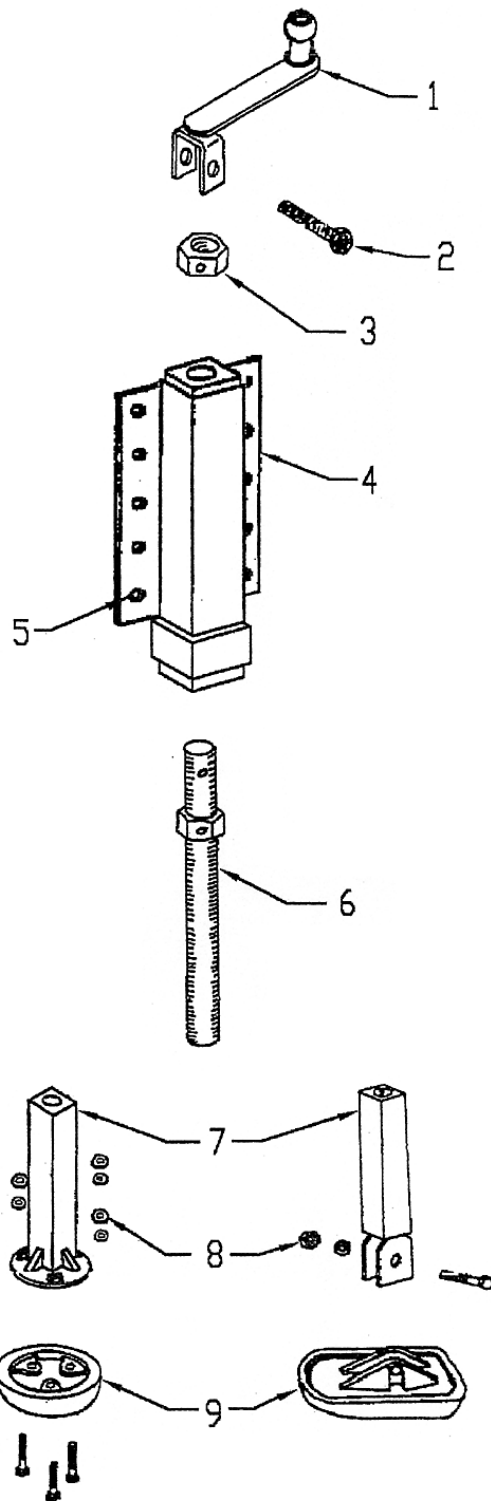


ALWAYS INCLUDE
SERIAL NO. OF
PLOW WHEN
ORDERING PARTS



MUSHROOM SHOE

SKID SHOE

STD. MUSHROOM SHOE ASS'Y P/N 7230-A11

ITEM	PART #	QTY.	DESCRIPTION
1	351-C	1	CRANK W/KNOB
2	5308-A393	1	BOLT ASS'Y
3	5750-A2	1	CRANK COLLAR
4	6611-A	1	2-1/2" SHOE HOUSING
5	5308-A4	4	BOLT ASS'Y
6	5750-A	1	1" ADJ. SCREW W/NUT
7	3546-BC	1	2" SHOE POST
8	5308-A35	3	BOLT ASS'Y
9	SP-185-HI	1	STD. MUSHROOM SHOE
OPTIONAL			
9	B-44637-A	1	CARBIDE MUSHROOM SHOE

STD. MUSHROOM SHOE
ASS'Y P/N 7230-A37 (1-WT)

STD. MUSHROOM SHOE
ASS'Y P/N 7230-A7 (1-WH)

ITEM	PART #	QTY.	DESCRIPTION
1	351-C	1	CRANK W/ KNOB
2	5308-A393	1	BOLT ASS'Y
3	5750-A2	1	CRANK COLLAR
4	6611-A	1	2-1/2" SHOE HOUSING
5	5308-A4	4	BOLT ASS'Y
6	5750-A	1	1" ADJ. SCREW W/NUT
7	SEE NOTE	1	2" SHOE POST
8	5308-A114	3	BOLT ASS'Y - 3/4 X 5-1/2
9	2666-D1	1	STD. SKID SHOE

NOTE: USE 1604-A FOR 1-WT TABLE
USE 1947-A3 FOR 1-WH TABLE

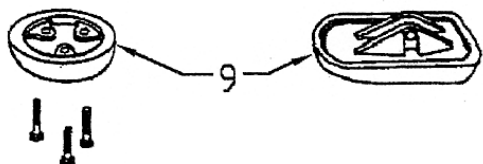
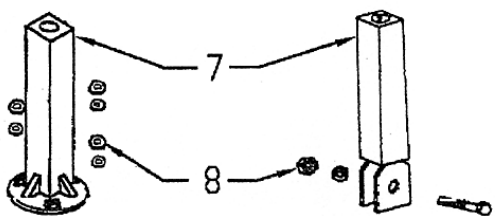
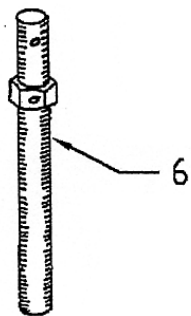
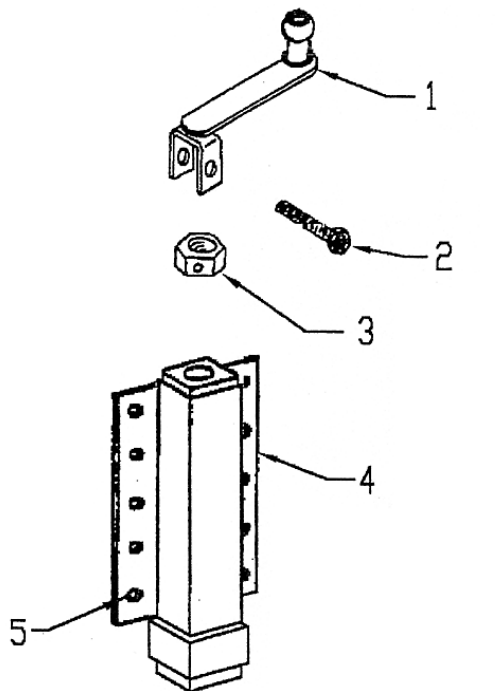
B.W UPDATED 8-30-05

The Gledhill Road Machinery Co.

PARTS DRAWING FOR STD. DUTY
MUSHROOM SHOE ASS'Y & STD.
DUTY SKID SHOE ASS'Y

PD-752

ALWAYS INCLUDE
SERIAL NO. OF
PLOW WHEN
ORDERING PARTS



MUSHROOM SHOE

SKID SHOE

HEAVY DUTY MUSHROOM SHOE
ASS'Y P/N 7230-A22

ITEM	PART #	QTY.	DESCRIPTION
1	351-C	1	CRANK W/ KNOB
2	5308-A431	1	BOLT ASS'Y
3	7628-A2	1	CRANK COLLAR
4	7623-A	1	3" SHOE HOUSING
5	5308-A4	4	BOLT ASS'Y
6	7628-A	1	1-1/4" ADJ. SCREW W/NUT
7	9748-AB	1	2-1/2" SHOE POST
8	5308-A35	3	BOLT ASS'Y
9	SP-185-HI	1	STD. MUSHROOM SHOE
OPTIONAL			
9	B-44637-A	1	CARBIDE MUSHROOM SHOE

HEAVY DUTY SKID SHOE
ASS'Y P/N 7230-A38 (1-WT)

HEAVY DUTY SKID SHOE
ASS'Y P/N 7230-A24 (1-WH)

ITEM	PART #	QTY.	DESCRIPTION
1	351-C	1	CRANK W/ KNOB
2	5308-A431	1	BOLT ASS'Y
3	7628-A2	1	CRANK COLLAR
4	7623-A	1	3" SHOE HOUSING
5	5308-A4	4	BOLT ASS'Y
6	7628-A	1	1-1/4" ADJ. SCREW W/NUT
7	SEE NOTE	1	2-1/2" SHOE POST
8	5308-A114	1	BOLT ASS'Y
9	2666-D1	1	STD. SKID SHOE

NOTE: USE 14681-A FOR 1-WT
USE 7626-A1 FOR 1-WH

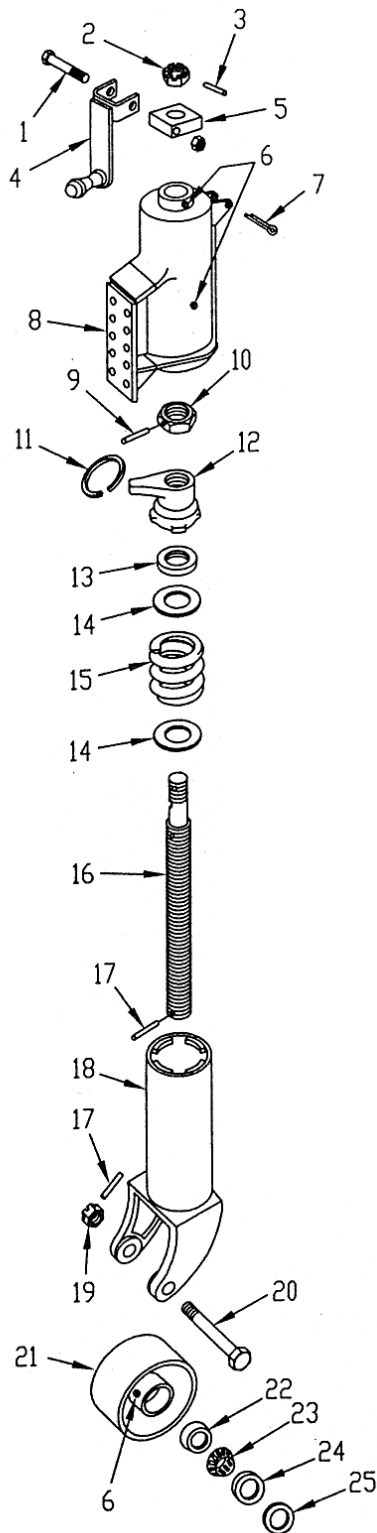
B.W UPDATED 8-31-05

The Gledhill Road Machinery Co.

PARTS DRAWING FOR HVY. DUTY
MUSHROOM SHOE ASS'Y & HVY.
DUTY SKID SHOE ASS'Y

PD-960

ALWAYS INCLUDE
SERIAL NO. OF
PLOW WHEN
ORDERING PARTS



QUANTITY	PART #	ITEM	DESCRIPTION
1	7230-A15-8		8" CASTER WHEEL ASS'Y
1	7230-A15-10		10" CASTER WHEEL ASS'Y
1	1	5308-A410	1 BOLT ASS'Y
1	1	P-130-57	2 1" SLOTTED NUT
1	1	P-131-1	3 ROLL PIN - 3/16" X 1-1/2 LG.
1	1	4817-A	4 CRANK HANDLE W/KNOB
1	1	4816-A	5 CRANK BLOCK
3	3	P-129-1	6 1/4" GREASE FITTING
1	1	P-131-21	7 CLINCH PIN - 3/16 X 3" LG.
1	1	8492-B	8 CASTER HOUSING
1	1	P-131-2	9 ROLL PIN - 1/4 X 2 LG.
1	1	P-130-58-1	10 HALF NUT W/HOLE
1	1	4748-A	11 RETAINER RING
1	1	4729-B	12 STEM NUT
1	1	T126	13 THRUST BEARING
2	2	P-130-103	14 FLAT WASHER
1	1	4747-A	15 SHOCK SPRING
*	1	4759-A	16 ADJUSTING SCREW ASS'Y
2	2	P-131-31	17 ROLL PIN - 3/16 X 2 LG.
1	1	4730-C	18 CASTER FORK
1	1	P-130-31	19 AXLE NUT (1-1/8 SL. HEX NUT)
**	1	356-A	20 AXLE BOLT ASS'Y
	1	P-905	21 CASTER WHEEL - 8" W/CUPS
	1	3261-C	21 CASTER WHEEL - 10" W/CUPS
***	2	14276	22 BEARING SUP - INCLUDED W/WHEEL
2	2	14120	23 BEARING CONE
2	2	17617	24 GREASE SEAL
2		11284-A	25 SPACER

* ITEMS 2, 3, 9, 10 & 17 INCLUDED IN ADJUSTING SCREW ASS'Y NO. "4759-A"

** ITEMS 17 & 19 INCLUDED IN AXLE BOLT ASS'Y NO. "356-A"

*** ITEM 22 INCLUDED WITH WHEEL ASS'Y NUMBERS "P-905" & "3261-C"

USE WITH INNER POST
ASS'Y INSTRUCTIONS - INS-359

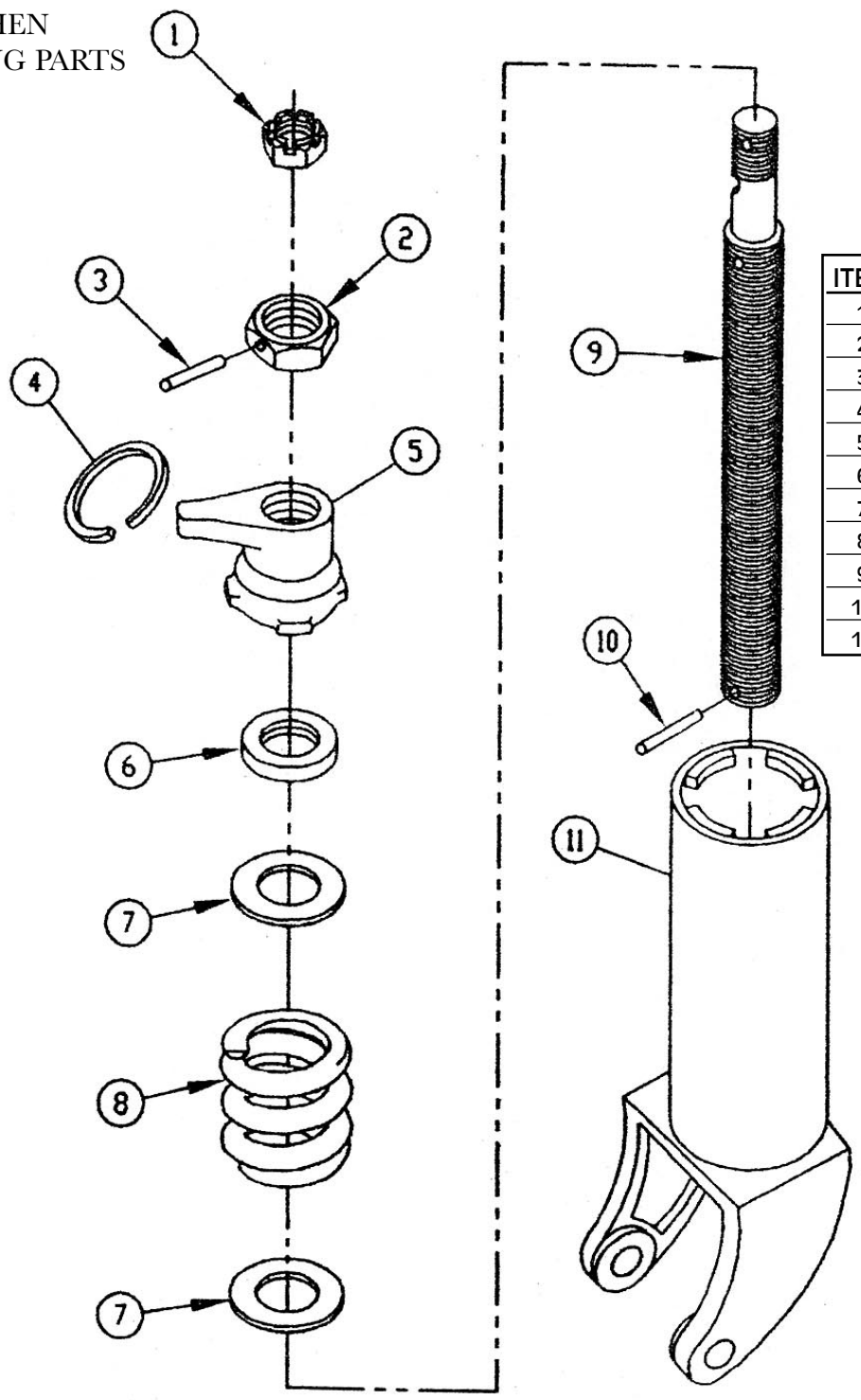
B.W UPDATED 6-22-05

The Gledhill Road Machinery Co.

PARTS DRAWING FOR 8" & 10"
CASTER WHEEL ASS'Y

PD-908

ALWAYS INCLUDE
SERIAL NO. OF
PLOW WHEN
ORDERING PARTS



ITEM	PART	REQ. #	NAME	DESCRIPTION	P/M
1	P-130-57	1	SLOTTED NUT	1" - 8 NC SLOTTED NUT	
2	P-130-58	1	HALF NUT	1-1/4" - 7 NC HALF NUT	
3	P-131-2	1	ROLL PIN	1/4 DIA. X 2 LG.	
4	4748-A	1	RETAINER RING	SEE DWG.	
5	4729-B	1	STEM NUT	SEE DWG.	
6	T-126	1	THRUST BEARING	SEE DWG.	
7	P-130-103	2	FLAT WASHER	2.489" OD X 1.31" ID X .59" THICK	
8	4747-A	1	SHOCK SPRING	SEE DWG.	
9	4759-A1	1	ADJUSTING SCREW	1-1/4" DIA. CRS. X 16 LG.	
10	P-131-31	1	ROLL PIN	3/16" DIA. X 2" LG.	
11	4730-C	1	CASTER FORK	SEE DWG.	

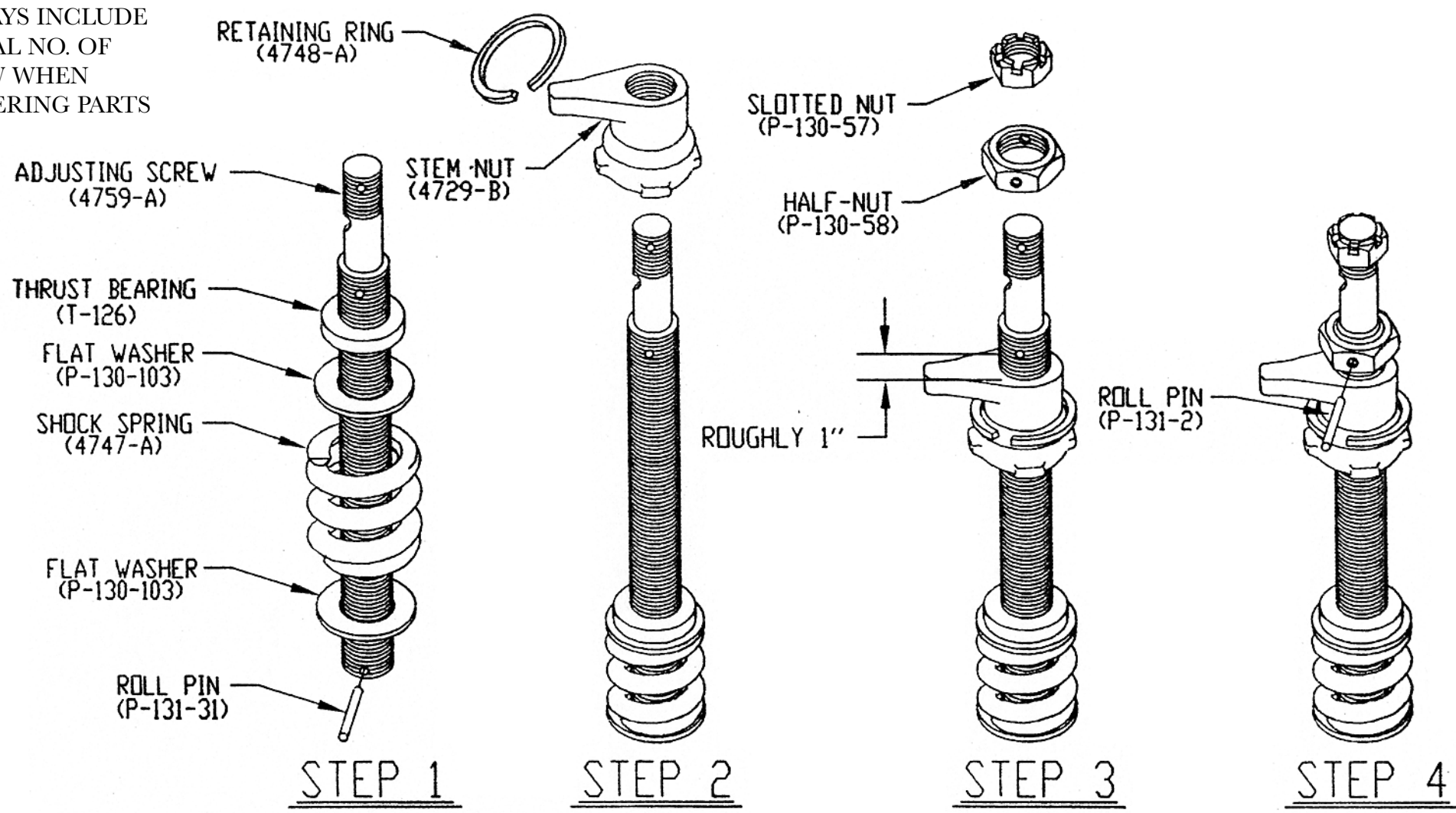
USE W/ PD-908

The Gledhill Road Machinery Co.

PARTS DRAWING FOR INNER
POST FOR 8" & 10"
CASTER WHEEL ASS'Y

INS-359A

ALWAYS INCLUDE
SERIAL NO. OF
PLOW WHEN
ORDERING PARTS



ASSEMBLY INSTRUCTIONS

STEP 1. INSERT ROLL PIN IN THE BOTTOM OF THE ADJUSTING SCREW. THEN ADD ITEMS IN THE FOLLOWING ORDER: FLAT WASHER, SHOCK SPRING, FLAT WASHER, & THRUST BEARING.

STEP 2. SLIDE RETAINING RING OVER THE STEM NUT ARM. THEN SPRAY ANTI-SEIZE ON THE SCREW AND STEM NUT. THEN SCREW ON THE STEM NUT UNTIL THE TOP IS ABOUT AN INCH BELOW THE WHOLE.

STEP 3. SCREW ON HALF-NUT, AND THEN THE SLOTTED NUT.

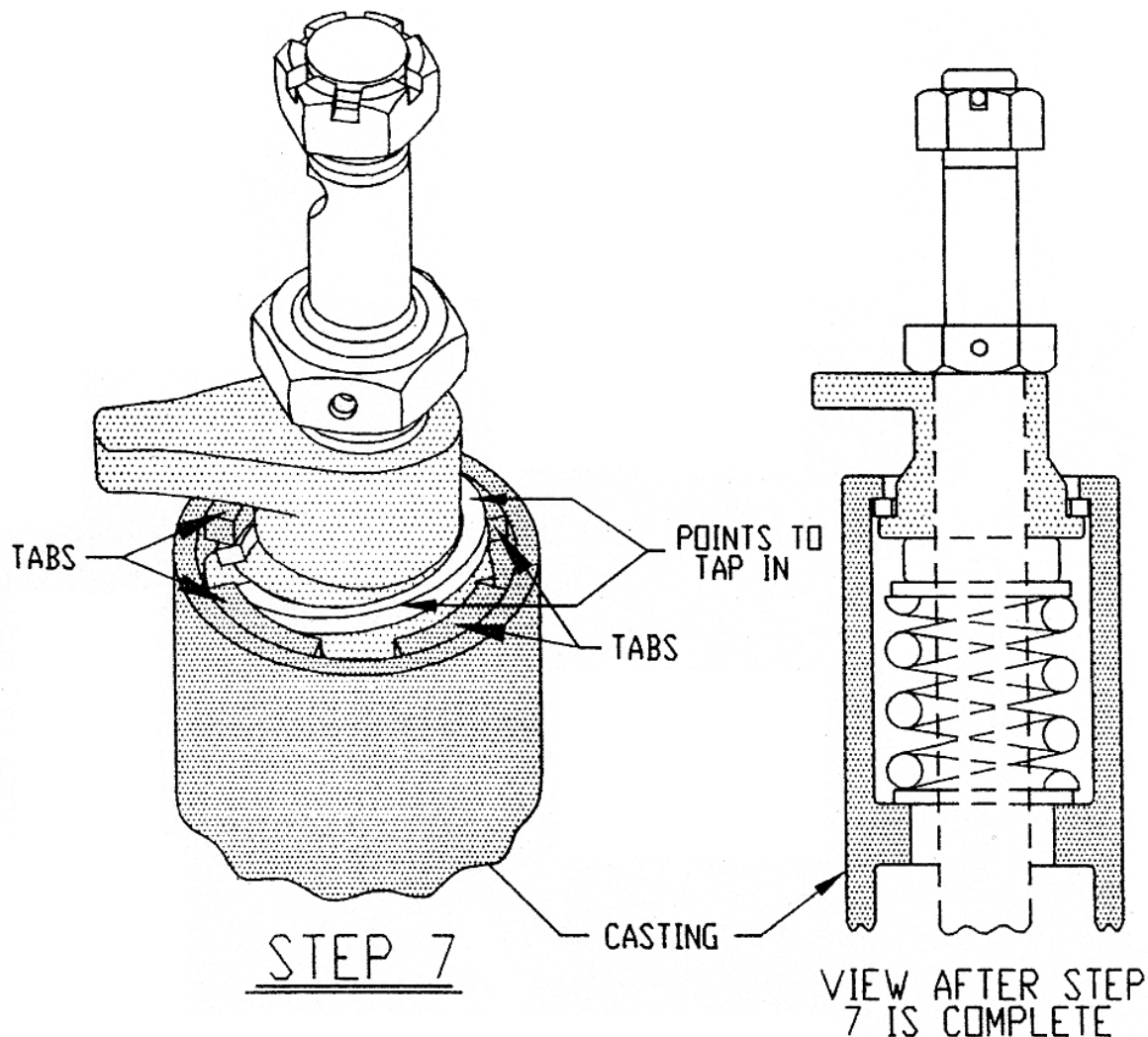
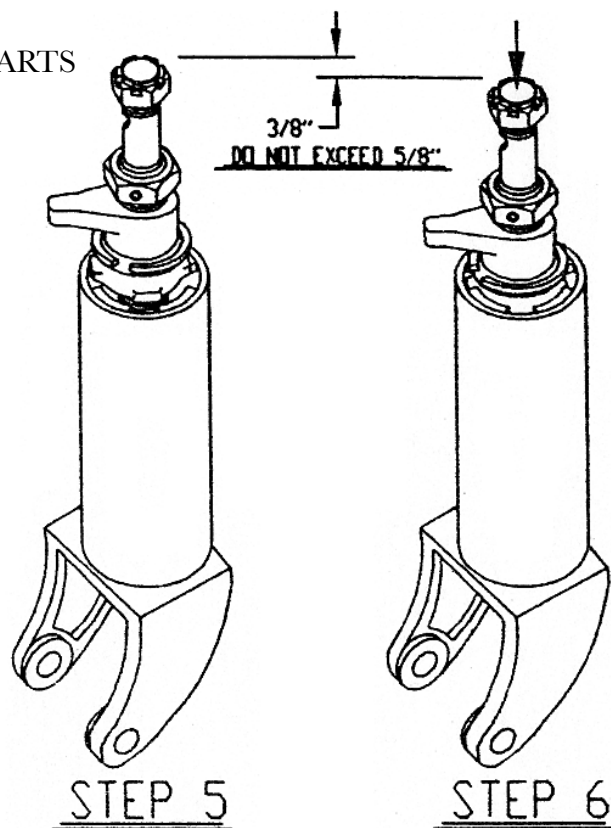
STEP 4. ALIGN HALF-NUT WITH THE HOLE AND DRIVE IN A ROLL PIN.

USE W/ PD-908 PG. 2 OF 3

The Gledhill Road Machinery Co.

PARTS DRAWING FOR INNER
POST FOR 8" & 10"
CASTER WHEEL ASS'Y **INS-359B**

ALWAYS INCLUDE
SERIAL NO. OF
PLOW WHEN
ORDERING PARTS



ASSEMBLY INSTRUCTIONS

STEP 5. INSERT ASSEMBLY FROM STEP 4 INTO THE CASTING BY LINING UP TABS SO THAT IT DROPS BELOW THE TABS IN THE CASTING.

STEP 6. PRESS ASSEMBLY DOWN 3/8" (NO MORE THAN 5/8")

STEP 7. ANGLE THE RETAINING RING SO THAT THE OPEN PART IS UNDERNEATH THE TABS ON THE CASTING. TAP ON THE SPOTS SHOWN ABOVE UNTIL THE RING SNAPS INTO PLACE BELOW ALL THE TABS ON THE CASTING. IF THE RETAINING RING WILL NOT GO UNDER THE TABS THEN PRESS THE ASSEMBLY DOWN (NO MORE THAN 5/8" TOTAL) UNTIL YOU GET THE RING IN. YOU CAN THEN RELEASE THE PRESSURE HOLDING THE ASS'Y DOWN.

NOTE!

TO COMPLETE ASS'Y REMOVE SLOTTED NUT AND SLIDE THE CASTER HOUSING OVER THE INNER POST. INSTALL HANDLE AND THEN INSTALL THE SLOTTED NUT WITH A ROLL PIN.

USE W/ PD-908 PG. 3 OF 3

The Gledhill Road Machinery Co.

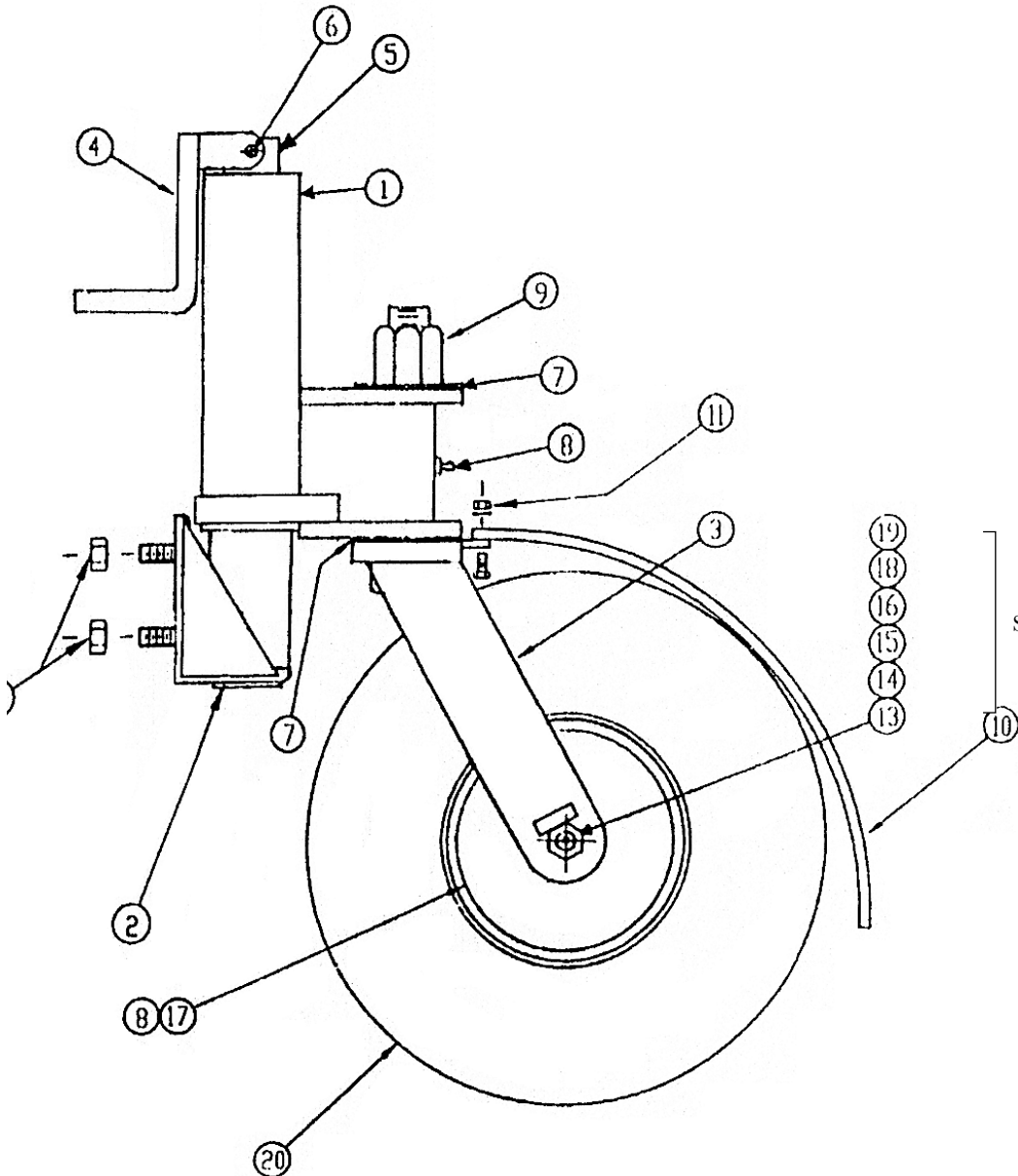
PARTS DRAWING FOR INNER
POST FOR 8" & 10"
CASTER WHEEL ASS'Y

INS-359C

ALWAYS INCLUDE
SERIAL NO. OF
PLOW WHEN
ORDERING PARTS

ITEM	PART #	REQ	DESCRIPTION
1	14490-B	1	CASTER HOLDING OUTSIDE
2	14506-B	1	CASTER POST INSIDE
3	14493-B	1	CASTER FORK ASS'Y
4	14496-B	1	CRANK HANDLE
5	14495-B	1	ADJUSTING SCREW
6	5308-A271	1	3/8-16NC CAPSCREW W/LOCKNUT
7	P-130-56	2	1-1/2 FLAT WASHER
8	P-129-3	2	1/4 DRIVE GREASE FITTINGS
9	P-130-55	1	1-1/2 - 6NC LOCKNUT
10	15578-A	1	RUBBER FENDER
11	5308-A404	2	1/4 - 20NC CAPSCREW W/FLAT WASH & LOCKNUT
12	5308-A4	4	3/4 - 10NC CAPSCREW W/LOCKNUT
13	5308-A270	1	5/8 DIA. X 9 LG. AXLE BOLT
14	14510-A	1	1-1/4 DIA. X 6-3/4 LG. CASTER AXLE
15	P-130-52	2	BEARING ADJ. NUT
16	P-130-51	2	LOCKNUT
17	P-117-31	1	HUB ASS'Y
18	P-117-22	2	BEARING W/SEAL
19	P-130-117	2	SPACER/WASHER
20	P-117-30	1	2 PC. RIM W/TIRE

PART NO. FOR THE WHOLE ASSY. IS: 7230-133

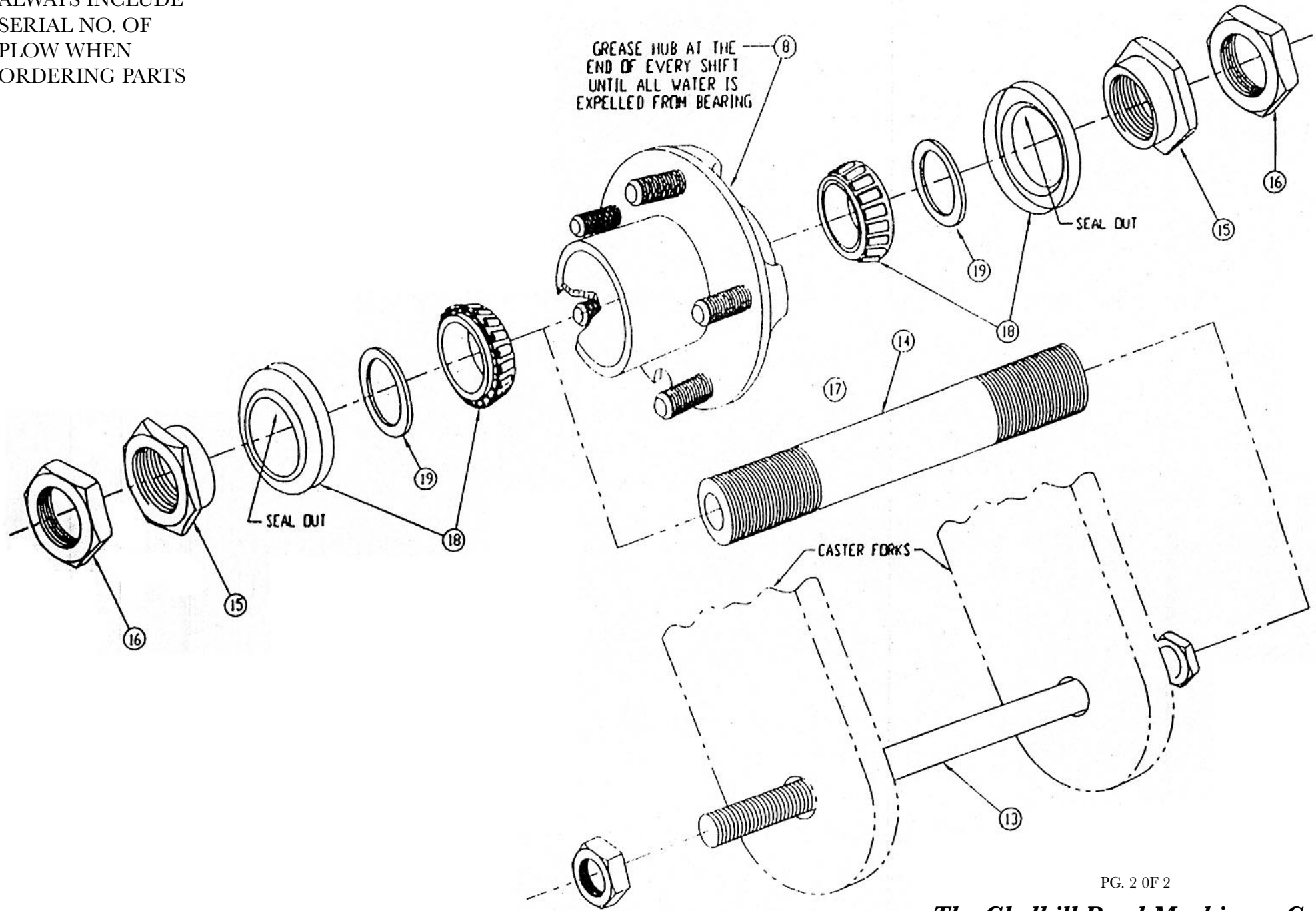


PG. 1 OF 2

The Gledhill Road Machinery Co.

PARTS DRAWING FOR
"BOLT ON" STD. PNEUMATICS
W/ 5/8 DIA. AXLE PD-1184

ALWAYS INCLUDE
SERIAL NO. OF
PLOW WHEN
ORDERING PARTS

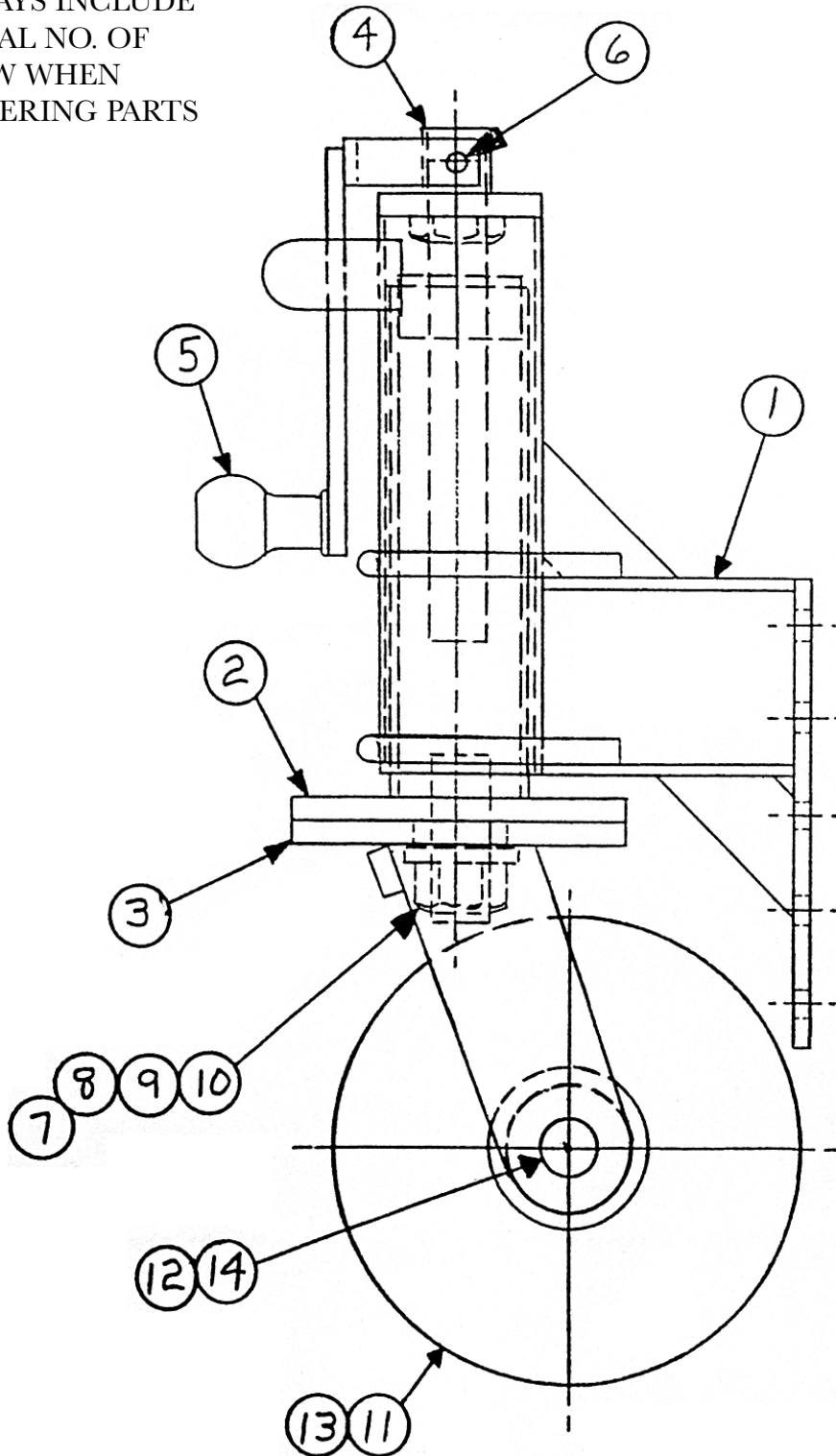


PG. 2 OF 2

The Gledhill Road Machinery Co.

PARTS DRAWING FOR
"BOLT ON" STD. PNEUMATICS
W/ 5/8 DIA. AXLE PD-1184

ALWAYS INCLUDE
SERIAL NO. OF
PLOW WHEN
ORDERING PARTS



REQ.	PART #	ITEM	NAME	DESCRIPTION
A	11653-CA		RDSI-PNEUMATIC	
B				
1	11646-C	1	CASTER HSG. ASS'Y	SEE DRWG.
1	11649-B	2	INSIDE POST	SEE DRWG.
1	13143-B	3	FORK ASS'Y	SEE DRWG.
1	7628-A	4	ADJUSTING SCREW	SEE DRWG.
1	351-C	5	CRANK ASS'Y	SEE DRWG.
1	5008-A74	6	PIN	3/8" X 2-1/2" LG. W/COTTER
1	11419-A	7	PIVOT BUSHING	2" O.D. X 1-1/4 X 33/64" LG.
1	11420-A	8	WASHER	2-1/2" O.D. X 1-5/16" X 5/16" LG.
1	11653-C9	9	SLOTTED HEX. NUT	1-1/4" - 12 UNF
1	11653-C10	10	COTTER PIN	1/4" DIA. X 2-1/2" LG.
1	10612-A	11	WHEEL ASS'Y	SEE DRWG.
1	10612-A1	11	TIRE AND TUBE	480 X 8.6 PLY
1	10609-C	12	HUB ASS'Y	SEE DRWG.
1	10610-C	13	WHEEL SHELL	SEE DRWG.
1	10611-A	14	RIM HOLE BUSHING	SEE DRWG.

The Gledhill Road Machinery Co.

PARTS DRAWING FOR
RDSI CASTER PNEUMATIC PD-1106