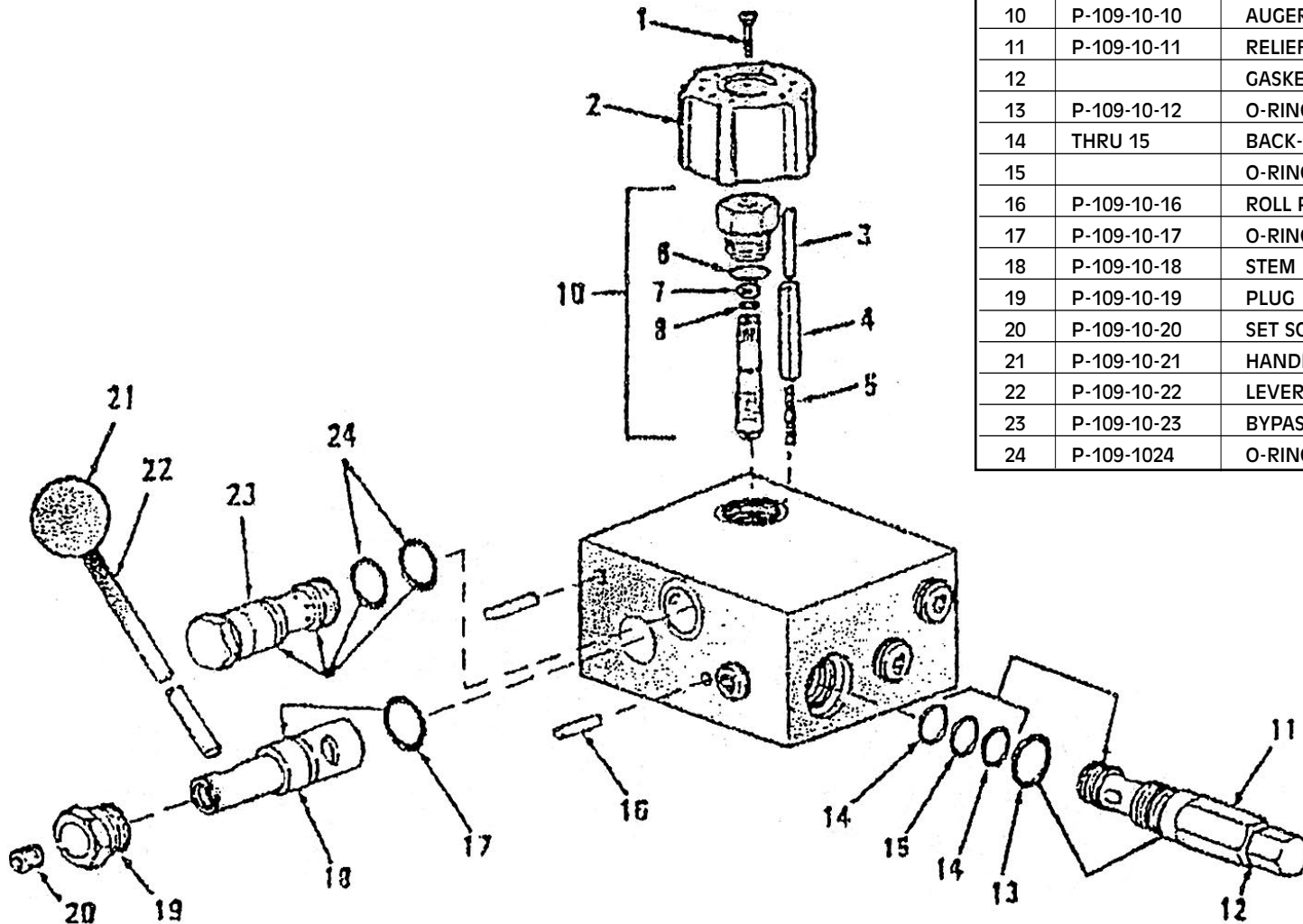


ALWAYS INCLUDE SERIAL NO. OF FLOW  
WHEN ORDERING PARTS

ITEM	PART #	DESCRIPTION	QTY.
1	P-109-10-1	SCREW	1
2	P-109-10-2	HANDKNOB	1
3	P-109-10-3	DOWEL PIN	1
4	P-109-10-4	POLL PIN	1
5	P-109-10-5	SPRING	1
6		O-RING, VITON, O-RING KIT FOR ADJUST ASSEMBLY	
7	P-109-10-6-7-8	BACK-UP, TEFLON	1
8		O-RING, VITON	
10	P-109-10-10	AUGER ADJUST ASS'Y, 10 GPM	1
11	P-109-10-11	RELIEF CARTRIDGE	1
12		GASKET, SEAL KIT	
13	P-109-10-12	O-RING, VITON, SEAL KIT	1
14	THRU 15	BACK-UP, TEFLON, SEAL KIT	
15		O-RING, VITON, SEAL KIT	
16	P-109-10-16	ROLL PIN	2
17	P-109-10-17	O-RING ( DUMP STEM)	1
18	P-109-10-18	STEM	1
19	P-109-10-19	PLUG	1
20	P-109-10-20	SET SCREW	1
21	P-109-10-21	HANDKNOB	1
22	P-109-10-22	LEVER	1
23	P-109-10-23	BYPASS ASSEMBLY	1
24	P-109-1024	O-RING, VITON (FOR P-109-10-23)	2



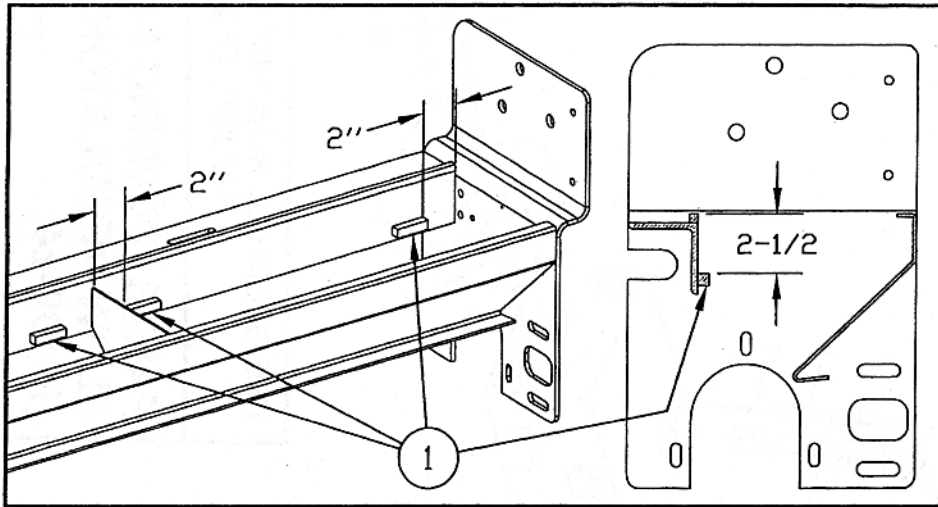
*The Gledhill Road Machinery Co.*

PARTS DRAWING FOR  
2FL12 FLOW REGULATOR  
(P-109-24)

PD-1109

ALWAYS INCLUDE SERIAL NO. OF PLOW  
WHEN ORDERING PARTS

ITEM	PART #	REQ	NAME	DESCRIPTION
1	F-188-3	8	REINF. BAR	1/2 HR SQUARE X 2" LG.
2	17296-A	3	BLOCK-OFF PLATE	-
2	5308-A44	8	CAPSCREW GR. 5	3/8-16 UNC X 1-1/4" LG. W/LN

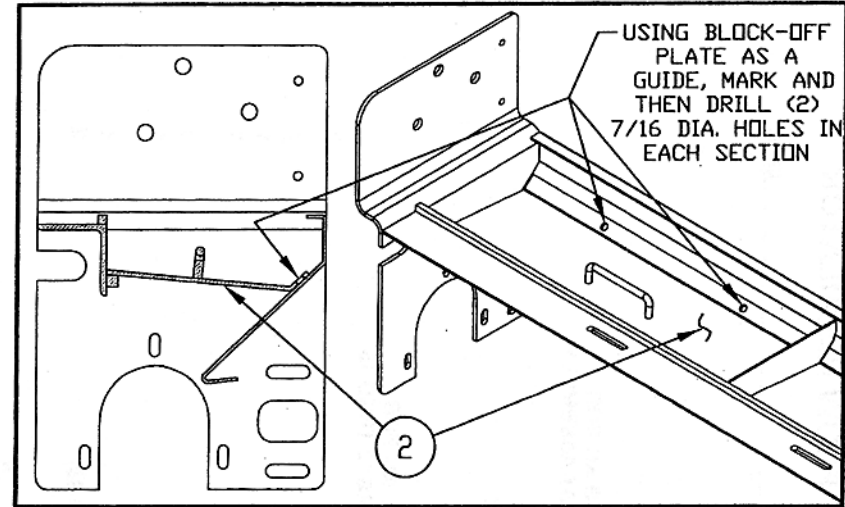


### STEP 1

PLACE THE PROVIDED 1/2" SQUARE X 2" LG. BARS ONTO THE INSIDE LEG OF THE GATE ROD ANGLE (TWO BARS IN EACH SECTION). POSITION THE BARS SO THERE IS A 2" GAP (AS SHOWN), SET THE DEPTH TO 2-1/2" BELOW THE 3/8" SQ. BAR THAT SITS ON TOP OF THE ANGLE. WELD ALONG THE BOTTOM, AND TWO ENDS OF THE BAR, BUT DO NOT WELD ALONG THE TOP EDGE.

### STEP 2

INSERT ONE OF THE PROVIDED BLOCK OFF PLATES INTO THE TROUGH AS SHOWN. THE SIDE WITH THE TWO HOLES SHOULD BE RESTING ON THE BACK OF THE TROUGH AS SHOWN. THE SIDE WITH THE TWO HOLES SHOULD BE RESTING ON THE BACK OF THE TROUGH PLATE, AND THE OTHER SIDE SHOULD BE RESTING ON TOP OF THE 1/2" SQ. BARS THAT WERE ADDED IN THE LAST STEP. ONCE POSITIONED, MARK THE TWO HOLES, AND DRILL 7/16" DIA. HOLES THROUGH THE TROUGH PLATE. REPEAT IN THE OTHER THREE SECTIONS.



### STEP 3

POSITION THE THREE BLOCK-OFF PLATES IN THE DESIRED ARRANGEMENT, SECURE WITH THE PROVIDED 3/8" X 1-1/4" BOLTS W/LOCKNUTS, WITH THE HEAD OF THE BOLT INSIDE THE TROUGH, INSTALL THE REMAINING TWO BOLTS IN THE UNUSED HOLES. INSTALLATION IS NOW COMPLETE.

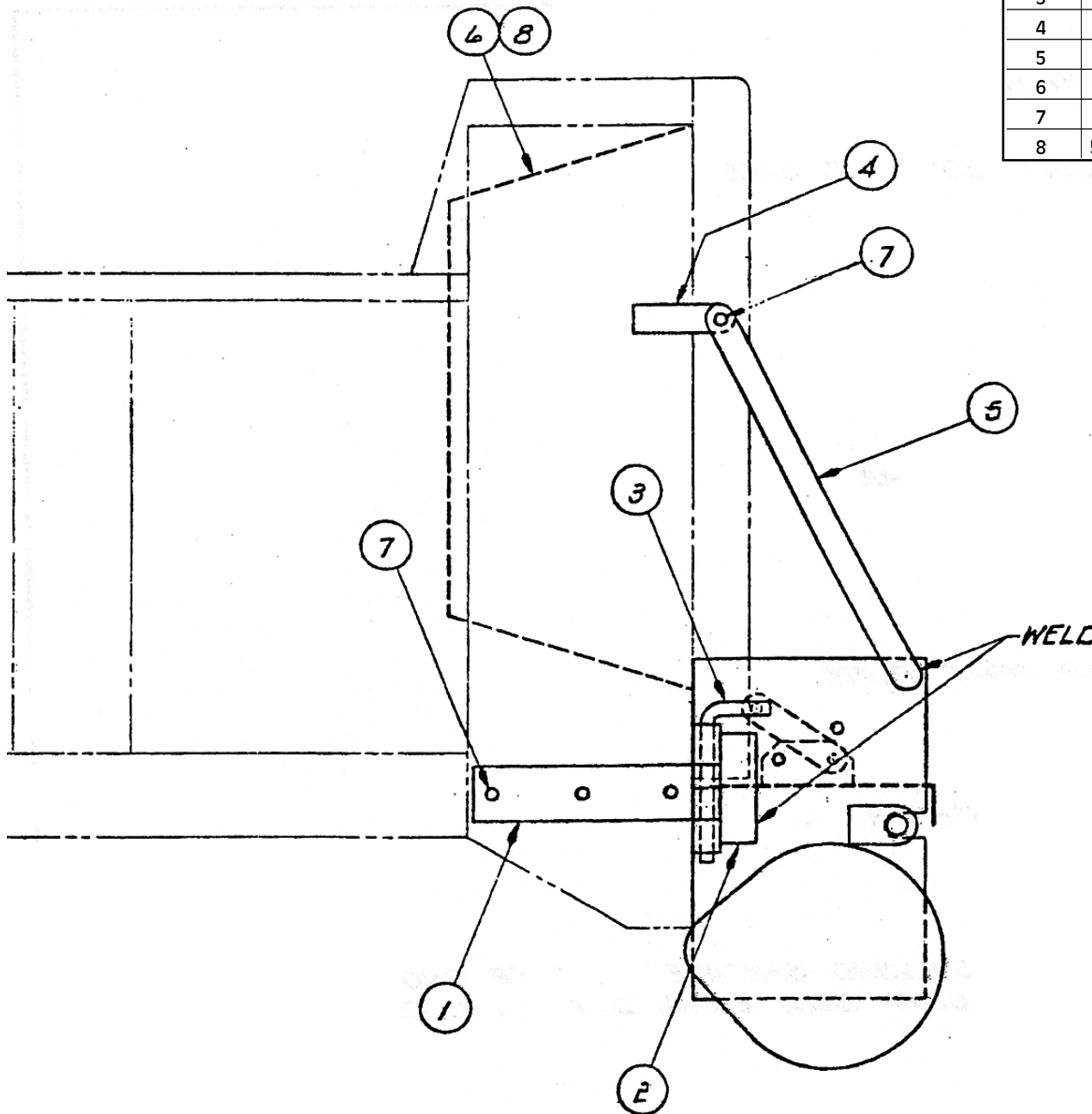
***The Gledhill Road Machinery Co.***

INSTRUCTIONS FOR MODIFYING  
THE STD. 707 SPREADER TO  
ACCEPT BLOCK-OFF PLATES

17370-A

ALWAYS INCLUDE SERIAL NO. OF FLOW  
WHEN ORDERING PARTS

ITEM	PART #	REQ.	DESCRIPTION
1	5514-A	2	MTG. BRKT. ASS'Y
2	5515-A3	2	MTG. BRKT. ASS'Y
3	5478-A1	2	MTG. PIN W/HAIR PIN
4	6333-A1	2	EAR
5	6333-A2	2	SUPPORT BAR
6	5941-A	2	FILLER PLATE
7	5308-A8	8	5/8" NC X 1-1/2" LG. CAPSCREW W/N & LW.
8	5308-A86	8	1/4" NC X 3" LG. CAPSCREW W/N & LW.



**NOTE!**

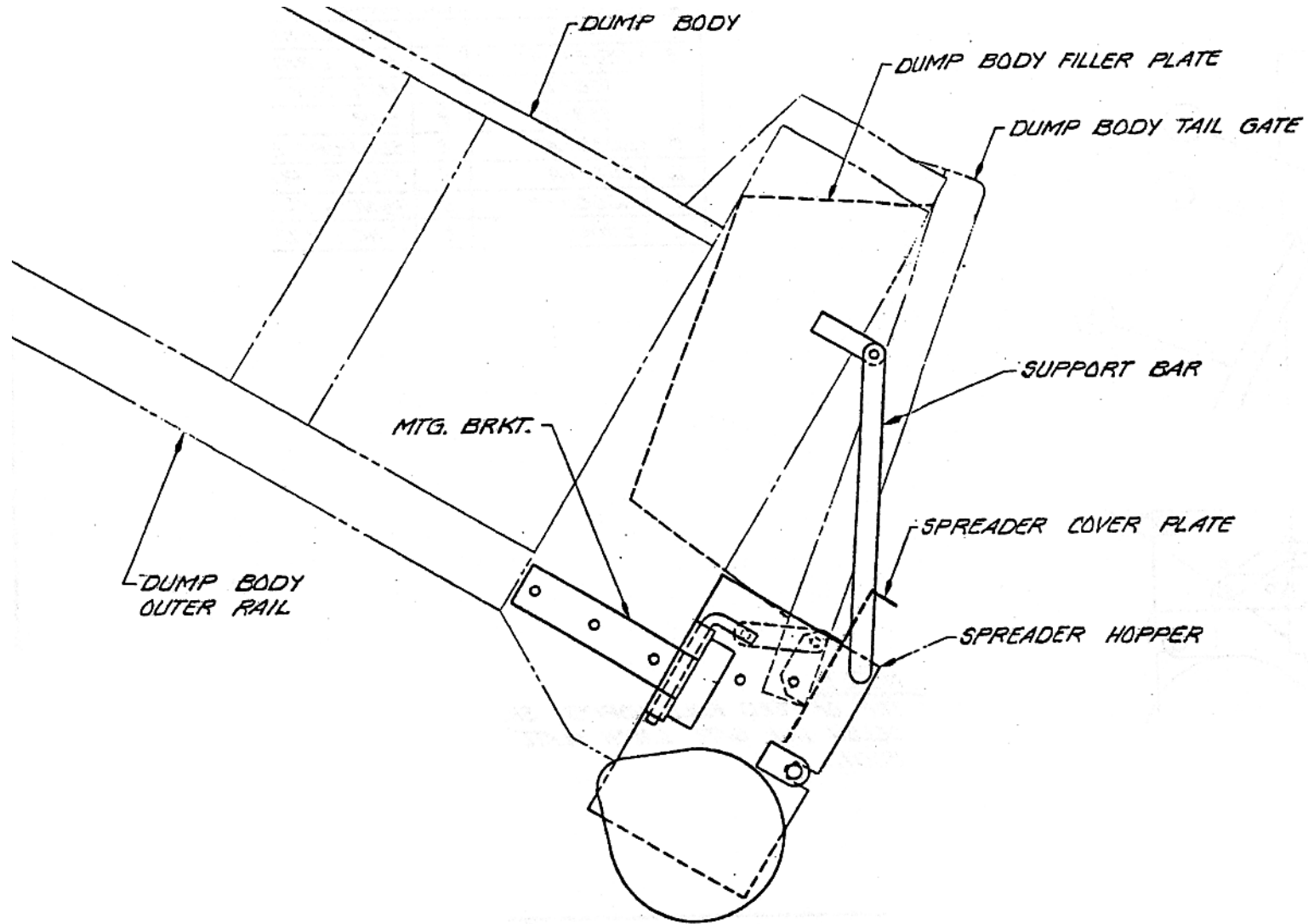
TOP OF FEED ROLL HOPPER SHOULD  
BE LOCATED 3/8" - 1/2" BELOW TAIL  
GATE LATCHH PLATE & UP AGAINST  
REAR OF DUMP BODY.

SHEET 1 OF 6

***The Gledhill Road Machinery Co.***

INSTALLATION DRAWING FOR  
MODEL 707 "NIAGRA FALLS"  
SPREADER W/ COVER PLATE INS-305

ALWAYS INCLUDE SERIAL NO. OF FLOW  
WHEN ORDERING PARTS

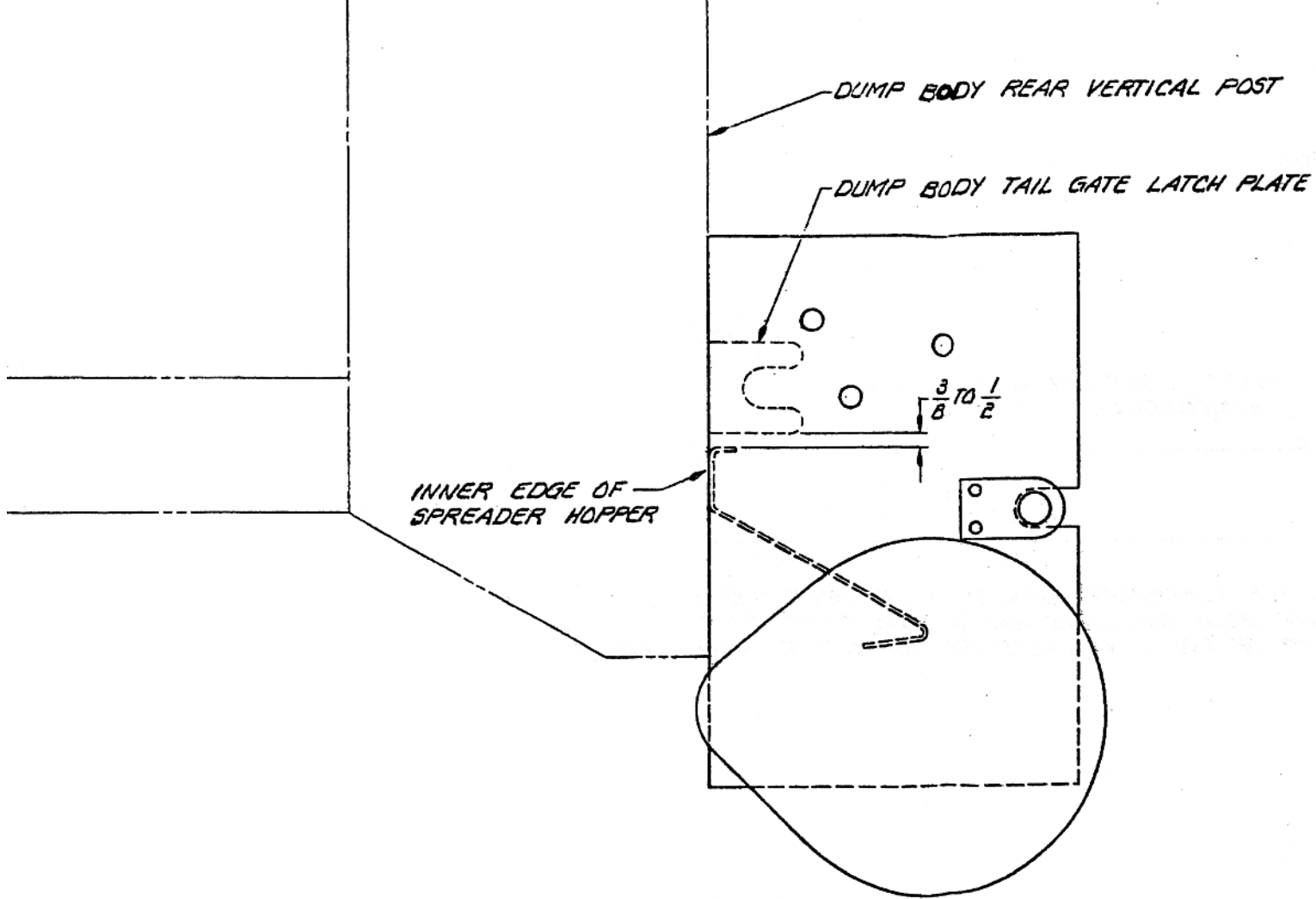


SHEET 2 OF 6

***The Gledhill Road Machinery Co.***

INSTALLATION DRAWING FOR  
MODEL 707 "NIAGRA FALLS"  
SPREADER W/ COVER PLATE INS-305

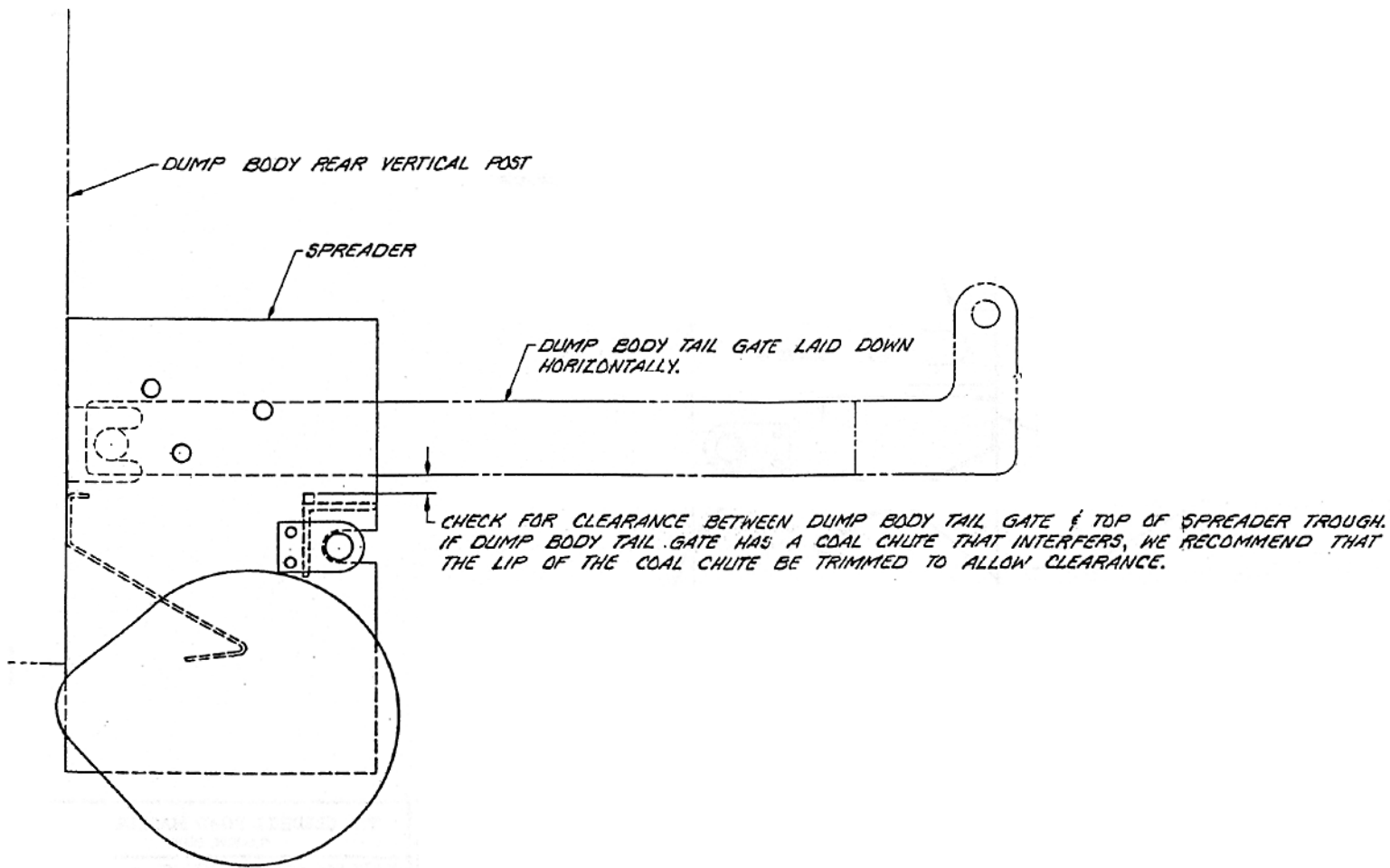
ALWAYS INCLUDE SERIAL NO. OF PLOW  
WHEN ORDERING PARTS



SHEET 3 OF 6

*The Gledhill Road Machinery Co.*

INSTALLATION DRAWING FOR  
MODEL 707 "NIAGRA FALLS"  
SPREADER W/ COVER PLATE INS-305

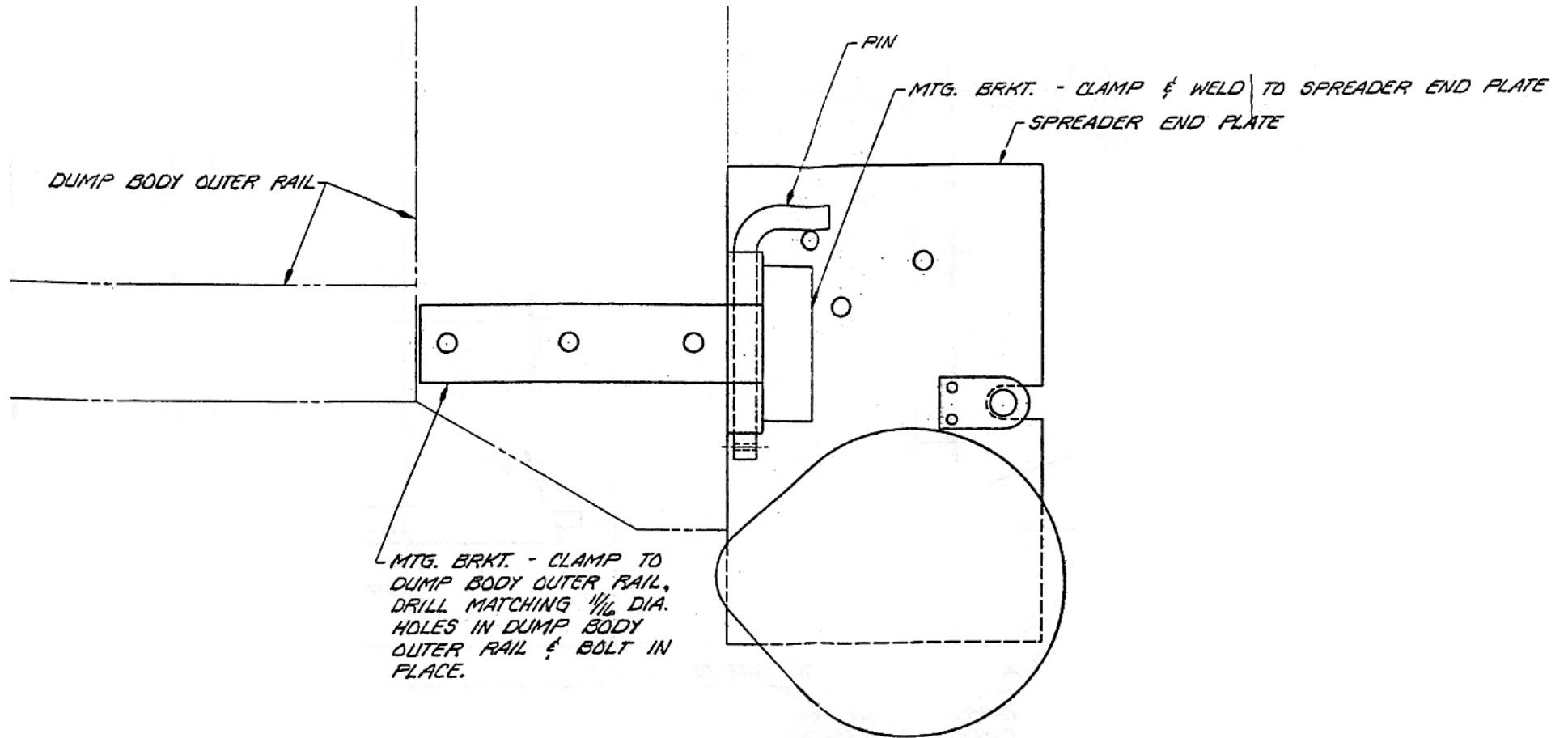


SHEET 4 OF 6

***The Gledhill Road Machinery Co.***

INSTALLATION DRAWING FOR  
 MODEL 707 "NIAGRA FALLS"  
 SPREADER W/ COVER PLATE INS-305

ALWAYS INCLUDE SERIAL NO. OF FLOW  
WHEN ORDERING PARTS

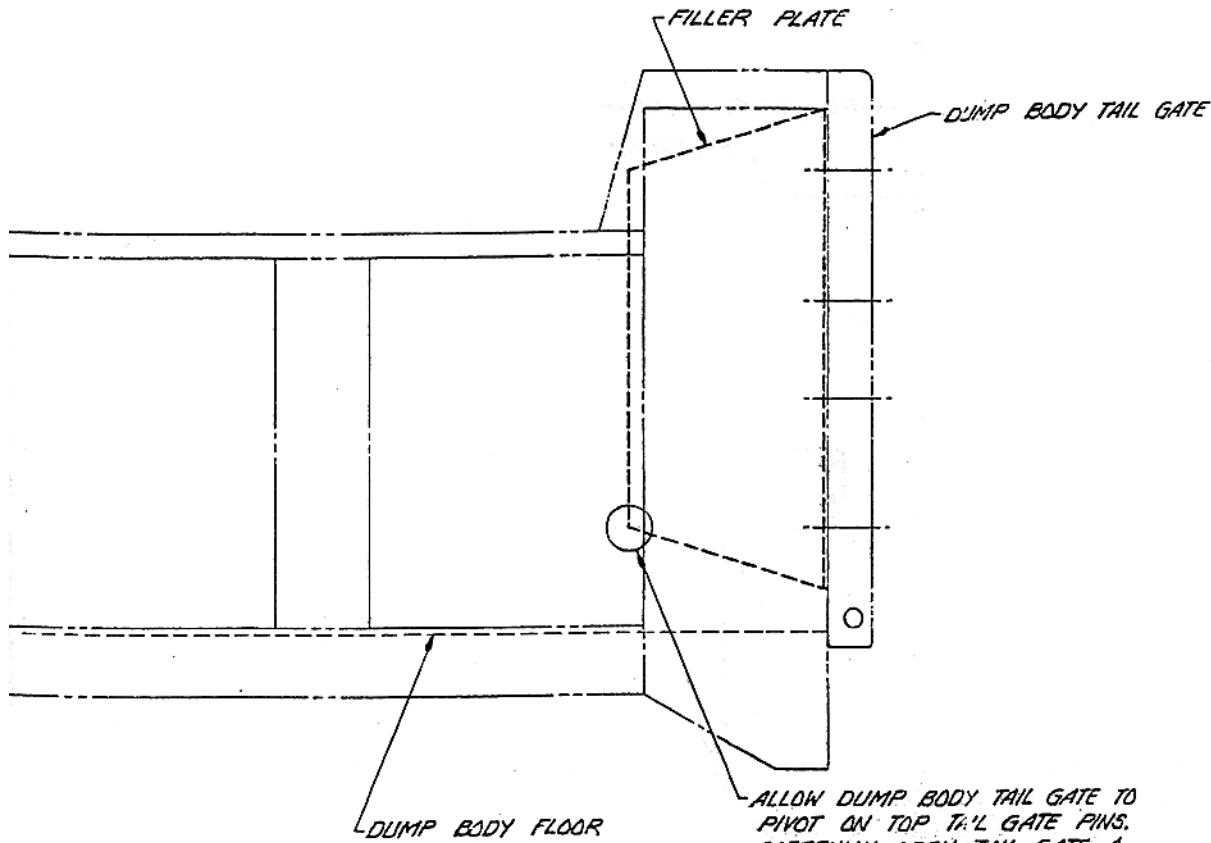


SHEET 5 OF 6

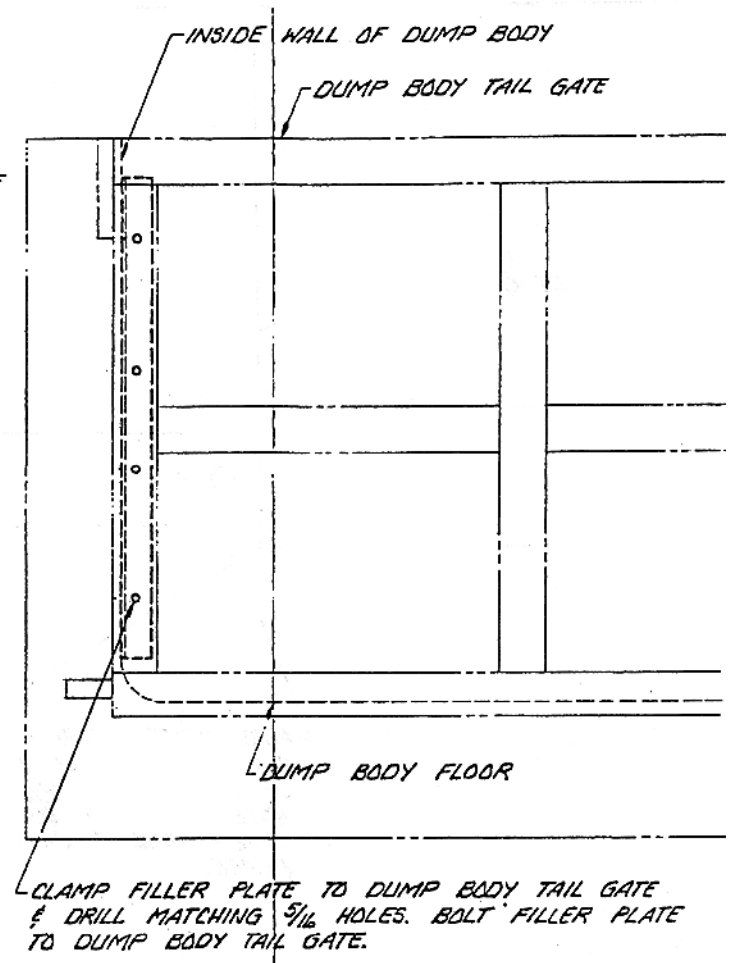
**The Gledhill Road Machinery Co.**

INSTALLATION DRAWING FOR  
MODEL 707 "NIAGRA FALLS"  
SPREADER W/ COVER PLATE INS-305

ALWAYS INCLUDE SERIAL NO. OF FLOW  
WHEN ORDERING PARTS



ALLOW DUMP BODY TAIL GATE TO  
PIVOT ON TOP TAIL GATE PINS.  
CAREFULLY OPEN TAIL GATE &  
CHECK FOR CLEARANCE BETWEEN  
THIS CORNER OF  
FILLER PLATE &  
DUMP BODY FLOOR.



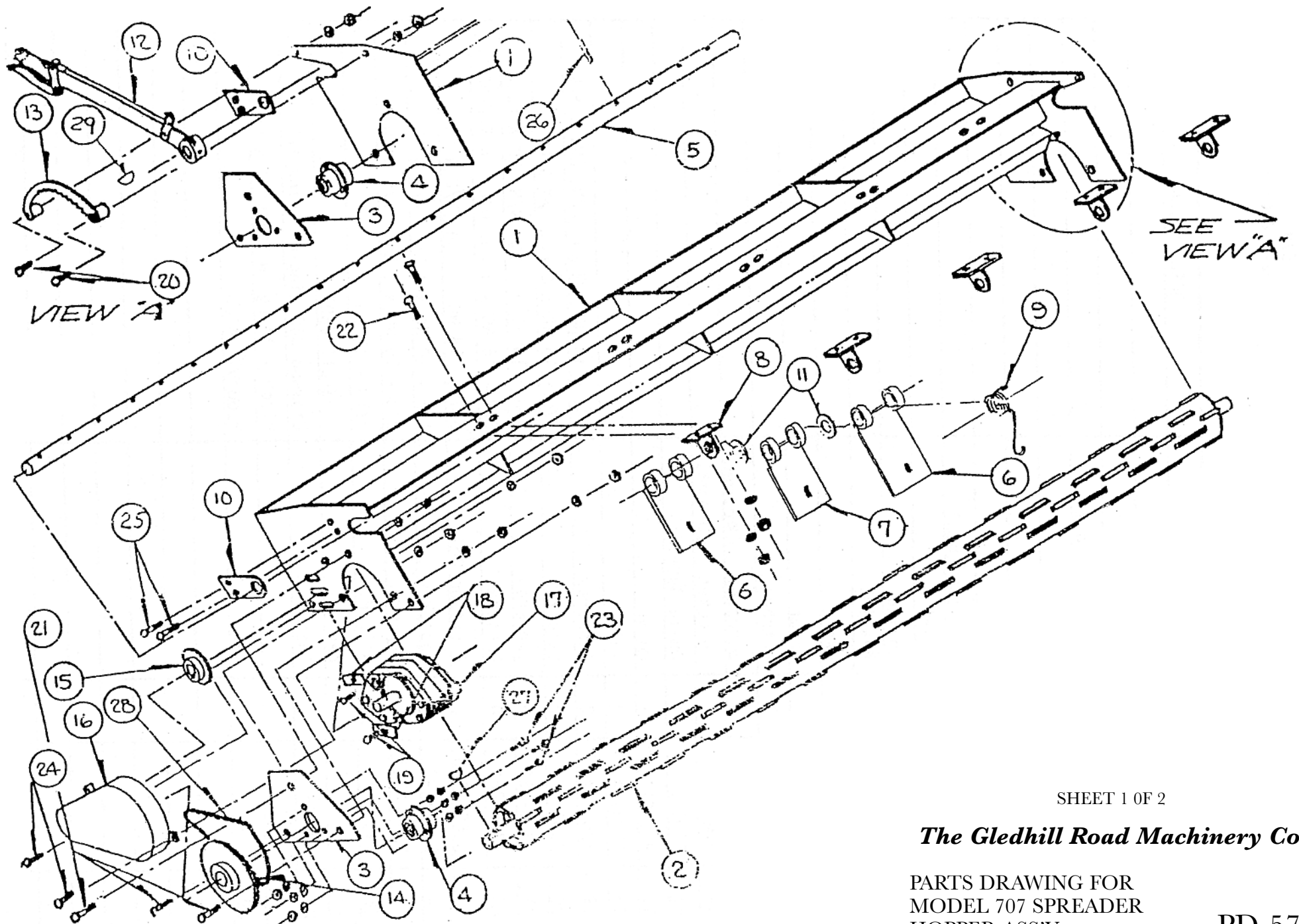
CLAMP FILLER PLATE TO DUMP BODY TAIL GATE  
& DRILL MATCHING  $\frac{5}{16}$  HOLES. BOLT FILLER PLATE  
TO DUMP BODY TAIL GATE.

SHEET 6 OF 6

**The Gledhill Road Machinery Co.**

INSTALLATION DRAWING FOR  
MODEL 707 "NIAGRA FALLS"  
SPREADER W/ COVER PLATE INS-305

ALWAYS INCLUDE SERIAL NO. OF FLOW  
WHEN ORDERING PARTS



SHEET 1 OF 2

*The Gledhill Road Machinery Co.*

PARTS DRAWING FOR  
MODEL 707 SPREADER  
HOPPER ASS'Y.

PD-579

ALWAYS INCLUDE SERIAL NO. OF FLOW  
WHEN ORDERING PARTS

ITEM	PART #	REQ.	DESCRIPTION
1	12979-D	1	HOPPER ASS'Y
2	5488-B	1	FEED ROLL ASS'Y
3	5509-A	2	BEARING FLANGE
4	5937-A1	2	BEARING
5	5864-A	1	AXLE
6	5866-B	18	GATE
7	5865-B	5	GATE (NOTCHED)
8	5877-A	5	BEARING
9	5924-A	23	SPRING
10	5878-A	2	BEARING
11	5933-B8	19	WASHER
12	5893-C	1	LEVER
13	5890-A	1	RATCHET
14	7901-A	1	SPROCKET (DRIVEN)
15	10666-A	1	SPROCKET (DRIVE)
16	5500-B	1	CHAIN GUARD
17	P-110-12	1	MOTOR
18	11347-A	2	SHIM
19	5308-A40	2	CAPSCREW; 1/2" - 13 NC X 2" LG. W/N, LW, & FLW
20	5308-A43	2	CAPSCREW; 3/8" - 16 NC X 2" LG. W/N & LW
21	5308-A84	6	CAPSCREW; 3/8" - 16 NC X 1" LG. W/N & LW & FLW
22	5308-A84	10	CAPSCREW; 3/8" - 16 NC X 1" LG. W/LW, & FI W-NO NUT
23	5308-A153	6	CARRIAGE BOLT; 5/16" - 18 NC X 1" LG. W/N & LW
24	5308-197	3	CAPSCREW; 1/4 - 20 NC X 1" LG. W/N & LW
25	5308-A121	4	CAPSCREW; 3/8 - 16 NC X 1" LG. W/N & LW
26	5933-B7	23	ROLL PIN; 3/16 - 1-1/2 LG.
27	--	1	KEY; WOODRUFF #807
28	P-132-6	1	CHAIN; DIAMOND #40 SINGLE STRAND 1/2 PITCH X 32 LG. W/CONNECTING LINK
29	--	1	KEY; WOODRUFF #406

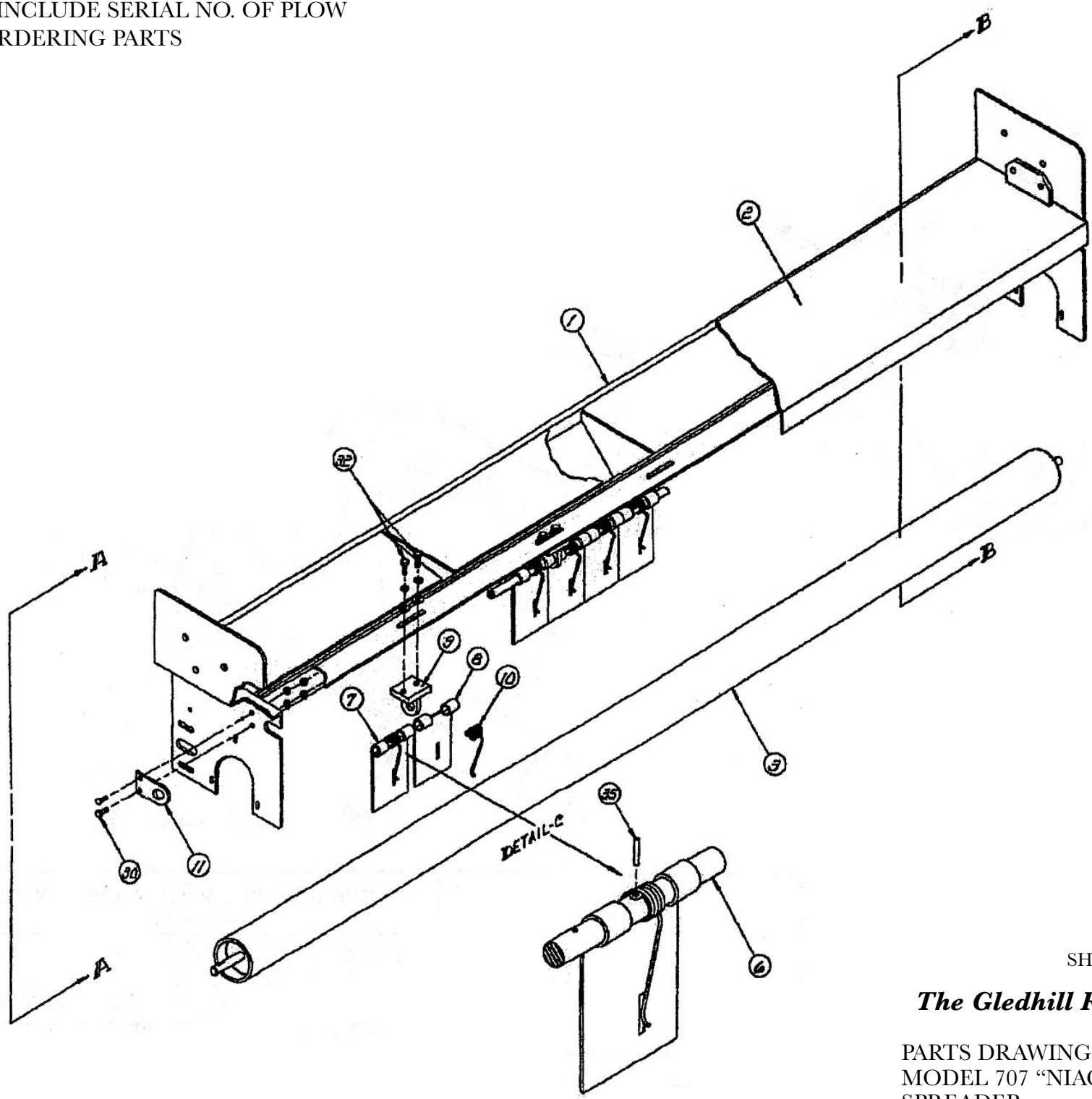
SHEET 2 OF 2

***The Gledhill Road Machinery Co.***

PARTS DRAWING FOR  
MODEL 707 SPREADER  
HOPPER ASS'Y.

PD-579

ALWAYS INCLUDE SERIAL NO. OF PLOW  
WHEN ORDERING PARTS



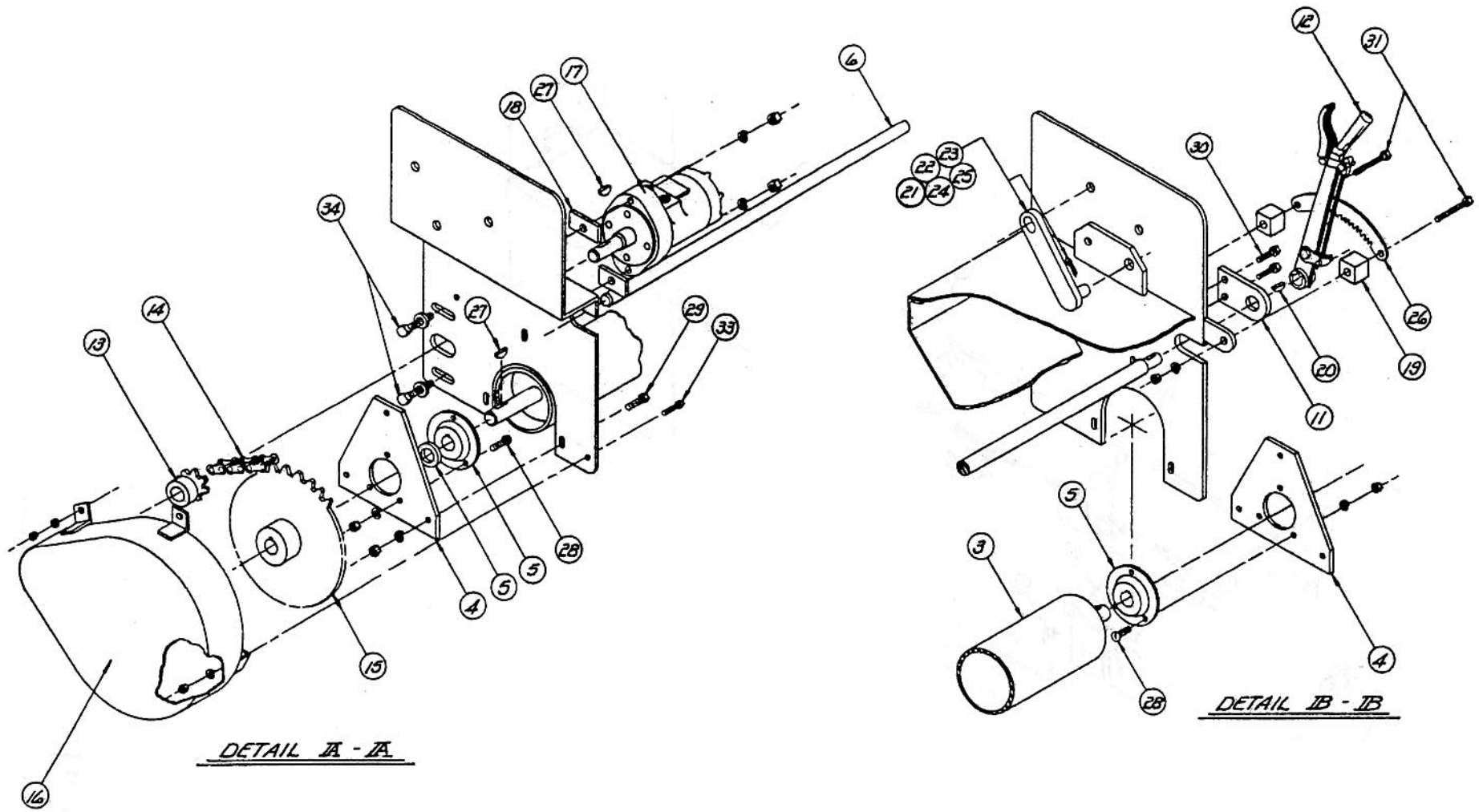
SHEET 1 OF 3

*The Gledhill Road Machinery Co.*

PARTS DRAWING FOR  
MODEL 707 "NIAGRA FALLS"  
SPREADER

PD-1083

ALWAYS INCLUDE SERIAL NO. OF PLOW  
WHEN ORDERING PARTS



SHEET 2 OF 3

*The Gledhill Road Machinery Co.*

PARTS DRAWING FOR  
MODEL 707 "NIAGRA FALLS"  
SPREADER PD-1083

REQ.	PART #	ITEM	NAME
A	PD-1083-A		707 SPREADER
1	12979-D	1	HOPPER ASS'Y
	12986-D	1	HOPPPER ASS'Y
1	12980-B	2	COVER PLATE ASS'Y
	12987-B	2	COVER PLATE ASS'Y
1	5488-B	3	FEED ROLL ASS'Y
	11965-B	3	FEED ROLL ASS'Y
2	5509-A	4	BEARINF FLANGE
2	5937-A1	5	BEARING
1	5864-A	6	AXLE
	11964-A	6	AXLE
18	5866-B	7	GATE
5	5865-B	8	GATE
5	5877-A	9	BEARING
23	5924-AA	10	SPRING HEAVY DUTY
2	5878-A	11	BEARING
1	5893-C	12	SPRING TENSION LEV.
1	1066-A	13	SPROCKET
1	12978-D11	14	CHAIN
1	7901-A	15	SPROCKET
1	5500-B	16	CHAIN GUARD ASS'Y
1	P-110-12	17	HYD. MOTOR
2	11347-A	18	SHIM
2	6733-A90	19	SPACER
1	12978-D16	20	KEY
2	11785-A	21	PIVOT LINK
2	5008-A91	22	BUTTON HD. RIVET
4	12977-D5	23	WASHER
2	12977-D6	24	SAFETY PIN
2	12977-D7	25	CHAIN
1	5890-A	26	RATCHET
2	12978-D15	27	KEY
6	5308-A158	28	CARRIAGE BOLT W/LN&LW
6	5308-A84	29	CAPSCREW W/N,LW & FW
4	5308-A121	30	CAPSCREW W/N & LW
2	5308-A43	31	CAPSCREW W/N & LW
10	5308-A84	32	CAPSCREW W/LW & FW
3	5308-A97	33	CAPSCREW W/N & LW
2	5308-A40	34	CAPSCREW W/N,LW, & FW
23	5933-B7	35	ROLL PIN
19	5933-B8	36	WASHER NOT SHOWN

ALWAYS INCLUDE SERIAL NO. OF PLOW  
WHEN ORDERING PARTS

**NOTE!**

A COMPLETE CONTROL GATE ASS'Y CONSISTING OF ITEMS #6, 7, 8, 9, 10, 11, 35 & 36 CAN BE ORDERED BY SPECIFYING PART NO. 5933-B FOR 707 OR PART NO. 11963-B FOR 707-1 TON.

ALWAYS SPECIFY SERIAL NUKBERS OF UNIT WHEN ORDERING REPLACEMENT PARTS.

SHEET 3 OF 3

***The Gledhill Road Machinery Co.***

PARTS DRAWING FOR  
MODEL 707 "NIAGRA FALLS"  
SPREADER

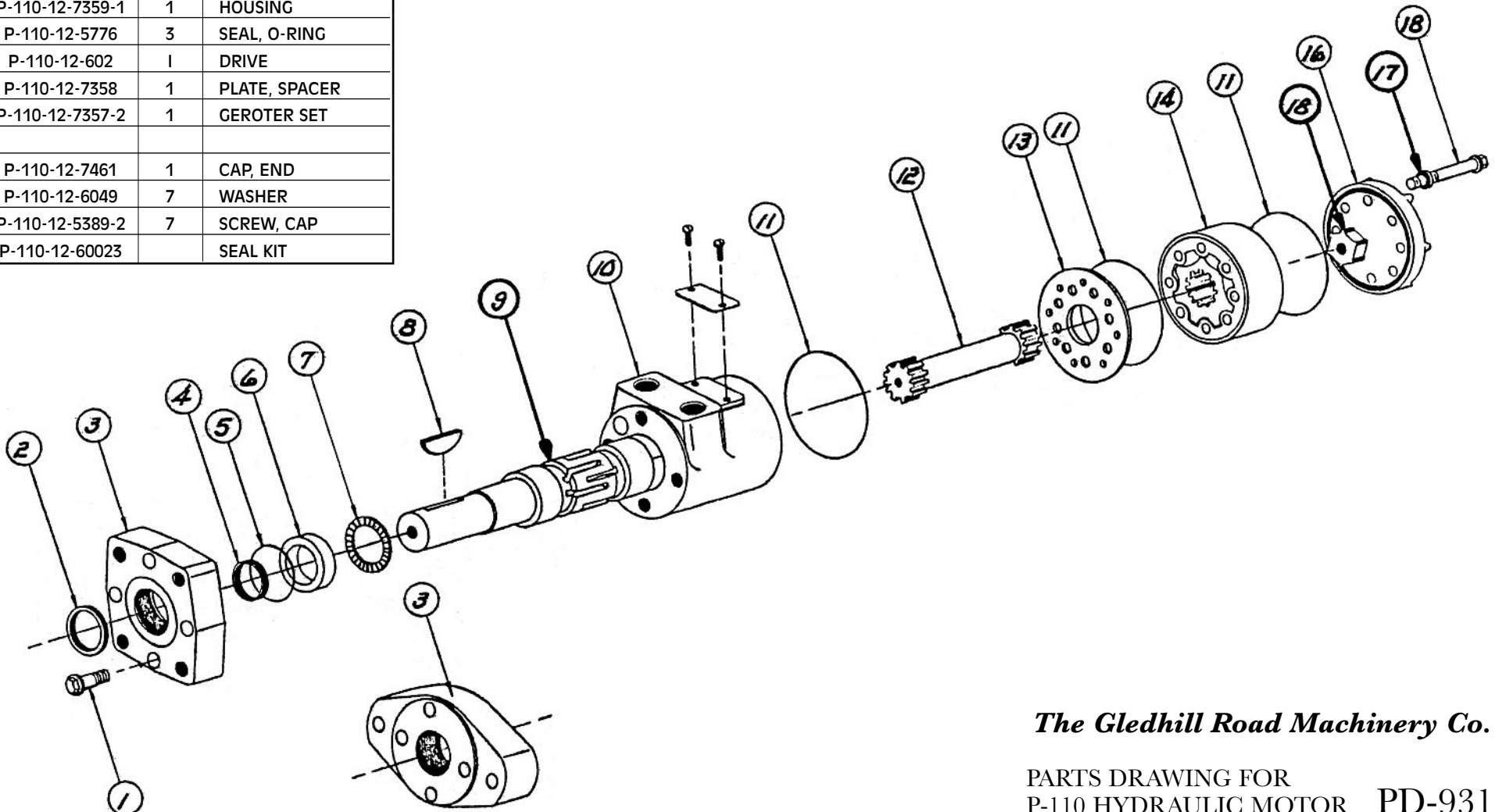
**PD-1083**

ALWAYS INCLUDE SERIAL NO. OF PLOW  
WHEN ORDERING PARTS

ITEM	PART #	REQ.	DESCRIPTION
1	P-110-12-5777	4	SCREW, CAP
2	P-110-12-9055-1	1	SEAL
3	P-110-12-7463	1	FLANGE, MTC.
4	P-110-12-9057-1	1	SEAL
5	P-110-12-9091	1	SEAL, O-RING
6	P-110-12-7462	1	RACE, BEARING
7	P-110-12-7537	1	BRG., THRUST
8	P-110-12-14193	1	KEY, WOODRUFF
9	P-110-12-7360-1	1	SHAFT, OUTPUT
10	P-110-12-7359-1	1	HOUSING
11	P-110-12-5776	3	SEAL, O-RING
12	P-110-12-602	1	DRIVE
13	P-110-12-7358	1	PLATE, SPACER
14	P-110-12-7357-2	1	GEROTER SET
15			
16	P-110-12-7461	1	CAP, END
17	P-110-12-6049	7	WASHER
18	P-110-12-5389-2	7	SCREW, CAP
19	P-110-12-60023		SEAL KIT

**NOTE!**

ITEM #19, SEAL KIT CONSISTS  
OF ITEMS #2, 4, 5, 11 & 17.



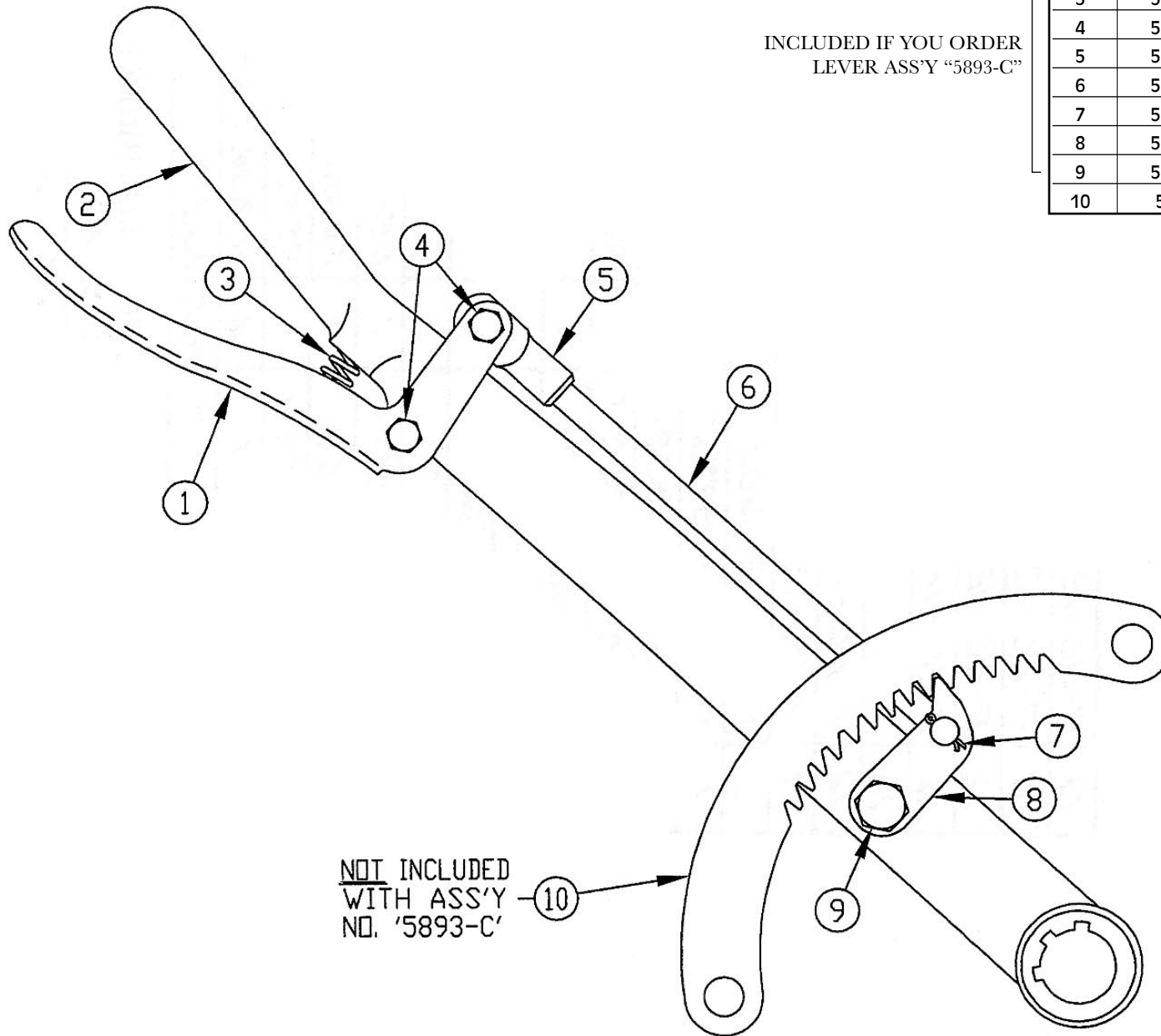
*The Gledhill Road Machinery Co.*

PARTS DRAWING FOR  
P-110 HYDRAULIC MOTOR PD-931

ALWAYS INCLUDE SERIAL NO. OF PLOW  
WHEN ORDERING PARTS

INCLUDED IF YOU ORDER  
LEVER ASS'Y "5893-C"

ITEM	PART #	REQ.	NAME/DESCRIPTION
1	5893-C1	1	GRIP LEVER
2	5893-C2	1	LEVER ARM
3	5893-C3	1	LATCH SPRING
4	5893-C4	2	LATCH BOLT W/NUT
5	5893-C5	1	ROD END
6	5893-C6	1	ROD
7	5893-C7	1	COTTER PIN FOR ROD
8	5893-C8	1	PAWL
9	5893-C9	1	PAWL BOLT W/NUT
10	5890-A	1	TENSION LEVER RATCHET



NOT INCLUDED  
WITH ASS'Y  
NO. '5893-C'

*The Gledhill Road Machinery Co.*

PARTS DRAWING FOR 707  
SPRING TENSION LEVER PD-936